

Service
Service
Service



Service Manual



TABLE OF CONTENTS

Location of PCBS	1-1	Headphone Board	7
Specifications	1-2	Power Board	8
Measurement Setup	1-3	Circuit diagram	8-1...8-2
Service Aids, Safety Instruction, etc.	1-4	Layout diagram.....	8-3
Instructions On CD Playability	1-5 to 1-6	Decode Board	9
Software Version Check & Upgrade	2-1	Circuit diagram	9-1...9-6
Malfunction Check Chart	2-2	Layout diagram.....	9-7...9-8
Disassembly Diagram	3-1	Explode View	10
Block Diagram	4-1	Service Partlist	11
Wiring Diagram.....	4-2	Factory Partlist	12
VFD Board	5		
Circuit diagram	5-1		
Layout diagram.....	5-2		
Tuner Board	6		
Circuit diagram	6-1		
Layout diagram.....	6-2		



© Copyright 2008 Philips Consumer Electronics B.V. Eindhoven, The Netherlands
All rights reserved. No part of this publication may be reproduced, stored in a retrieval system or transmitted, in any form or by any means, electronic, mechanical, photocopying, or otherwise without the prior permission of Philips.

Published by DB 0811 Service Audio Printed in The Netherlands Subject to modification

© 3141 785 32520

Version 1.0



PHILIPS

Specifications

AMPLIFIER

Rated Output Power2 x 45W RMS
 Signal-to-noise ratio ≥ 65 dBA
 Frequency response 100Hz – 15KHz, ± 3 dB
 Aux Input.....0.5V RMS 47kohm

DISC

Laser Type Semiconductor
 Disc Diameter 12cm/8cm
 Support Disc
DVD,DivX,CD-DA,CD-R,CD-RW,MP3-CD,WMA-CD
 Audio DAC 24Bits / 44.1kHz
 Total Harmonic Distortion $<0.1\%$ (1kHz)
 Frequency Response 4Hz - 20kHz (44.1kHz)
 S/N Ration >65 dBA

TUNER

FM Tuning Range 87.5 – 108 MHz
 Tuning grid 100K/ 50KHz

Sensitivity

– Mono, 26dB S/N Ratio 5uV
 – Stereo, 46dB S/N Ratio 100uV
 Selectivity >26 dB
 Image Rejection >26 dB
 Total Harmonic Distortion $<3\%$
 Signal to Noise Ration >65 dBA

SPEAKERS

Speaker Impedance 4ohm
 Speaker Driver, base 4.5"
 Speaker Driver, tweeter 3"
 Frequency Response 60 - 20 KHz

GENERAL INFORMATION

Total Output power 90 W RMS
 AC Power 220V / 50Hz(/93)
 ...110V-127V/60Hz... 220-240 V / 50Hz(/98/55)
 Operation Power Consumption 52W
 Standby Power Consumption <4 W
 Eco Standby Power Consumption <1 W
 Headphone Output 2X15mW 32ohm
 USB Direct Version 1.1

Dimensions

– Main unit (w x h x d) 248x280x105mm
 – Speaker box (w x h x d) 206x170x270mm

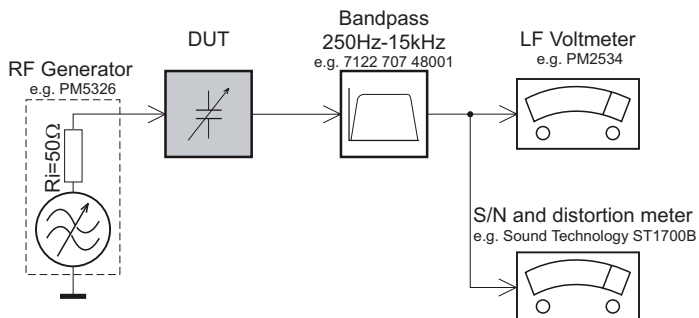
Weight

– With Packing 10 KG
 – Main Unit 1.53KG
 – Speaker box 0.38KG
 – Subwoofer..... 2.97KG

Specifications and external appearance are subject to change without notice.

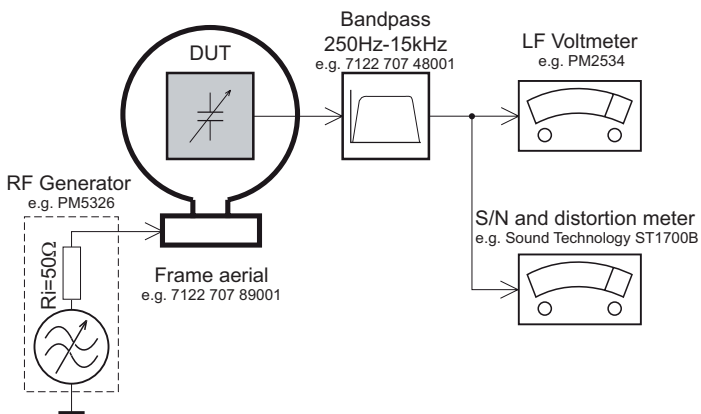
MEASUREMENT SETUP

Tuner FM



Use a bandpass filter to eliminate hum (50Hz, 100Hz) and disturbance from the pilotone (19kHz, 38kHz).

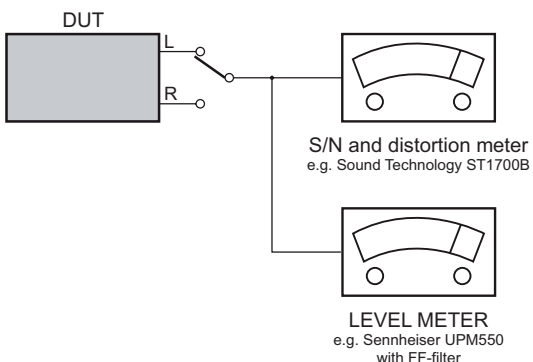
Tuner AM (MW,LW)



To avoid atmospheric interference all AM-measurements have to be carried out in a Faraday's cage. Use a bandpass filter (or at least a high pass filter with 250Hz) to eliminate hum (50Hz, 100Hz).

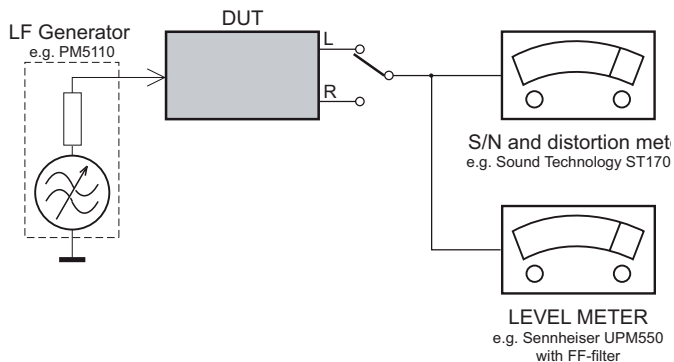
CD

Use Audio Signal Disc SBC429 4822 397 30184 (replaces test disc 3)



Recorder

Use Universal Test Cassette Cr02 SBC419 4822 397 30069 or Universal Test Cassette Fe SBC420 4822 397 30071



SERVICE AIDS

GB WARNING

All ICs and many other semi-conductors are susceptible to electrostatic discharges (ESD). Careless handling during repair can reduce life drastically.


When repairing, make sure that you are connected with the same potential as the mass of the set via a wrist wrap with resistance. Keep components and tools also at this potential.

ESD



GB

Safety regulations require that the set be restored to its original condition and that parts which are identical with those specified, be used

Safety components are marked by the symbol .

**CLASS 1
LASER PRODUCT**

INFORMATION ABOUT LEAD-FREE SOLDERING

Philips CE is producing lead-free sets from 1.1.2005 onwards.

IDENTIFICATION:

Regardless of special logo (not always indicated) one must treat all sets from 1 Jan 2005 onwards, according next rules:



- On our website www.atyourservice.ce.Philips.com you find more information to:
 - * BGA-de-/soldering (+ baking instructions)
 - * Heating-profiles of BGAs and other ICs used in Philips-sets
 - * Lead free

You will find this and more technical information within the "magazine", chapter "workshop news".

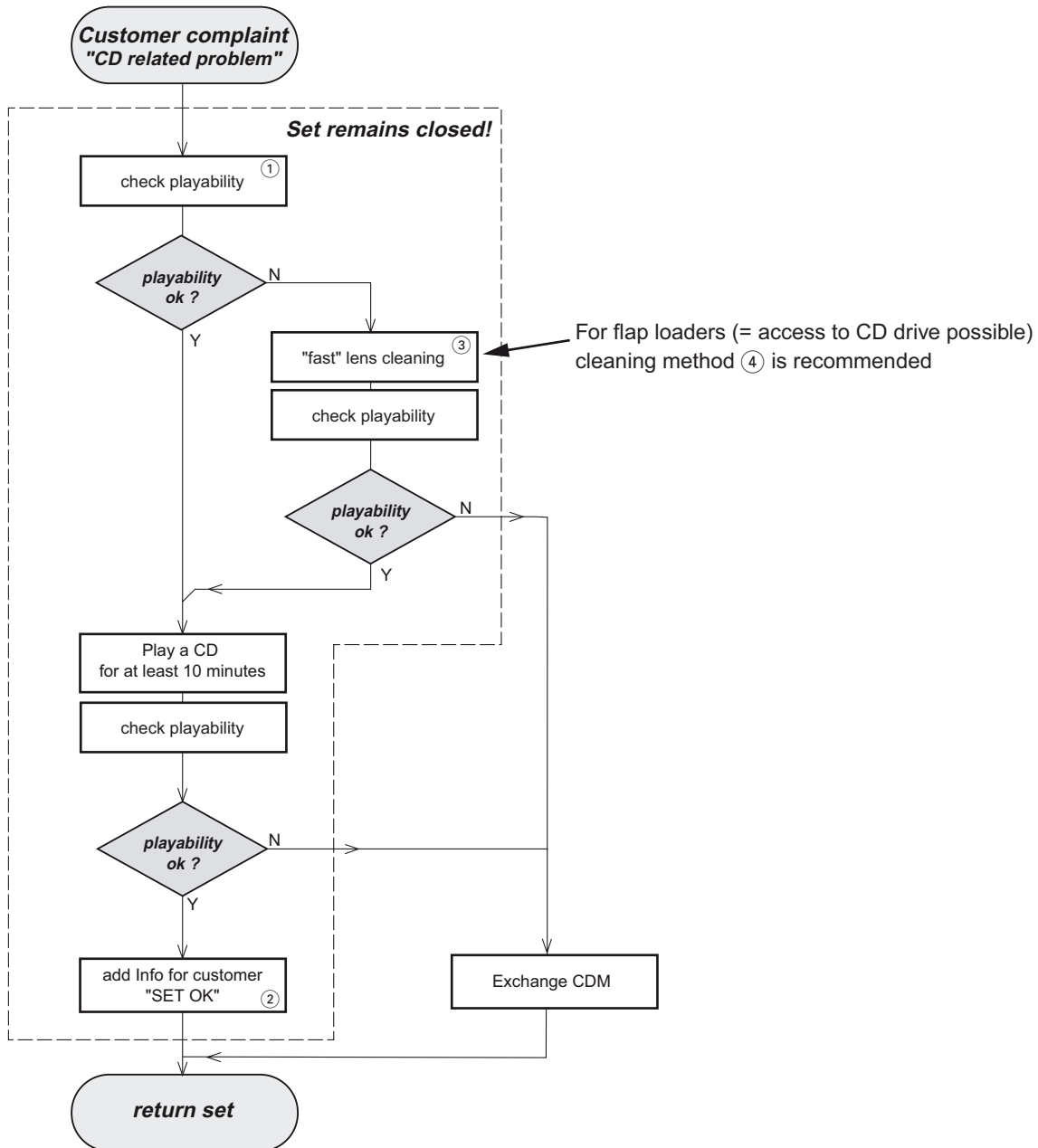
For additional questions please contact your local repair-helpdesk.

SERVICE INSTRUCTION

Safety regulations require that after a repair, the set must be returned in its original condition. Pay in particular attention to the following points:

- Route the wire trees correctly and fix them with the mounted cable clamps.
- Check the insulation of the AC Power lead for external damage.
- Check the strain relief of the AC Power cord for proper function.
- Check the electrical DC resistance between the AC Power Plug and the secondary side (only for sets which have a AC Power isolated power supply):
 1. Unplug the AC Power cord and connect a wire between the two pins of the AC Power plug.
 2. Set the AC Power switch to the "on" position (keep the AC Power cord unplugged!).
 3. Measure the resistance value between the pins of the AC Power plug and the metal shielding of the tuner or the aerial connection on the set. The reading should be larger than 4.5 Mohm (For U.S. it should be between 4.2 Mohm and 12 Mohm).
 4. Switch "off" the set, and remove the wire between the two pins of the AC Power plug.
- Check the cabinet for defects, to avoid touching of any inner parts by the customer.

INSTRUCTIONS ON CD PLAYABILITY



① - ④ For description - see following pages

INSTRUCTIONS ON CD PLAYABILITY

①

PLAYABILITY CHECK

For sets which are compatible with **CD-RW** discs
 use CD-RW Printed Audio Disc7104 099 96611
 TR 3 (Fingerprint)
 TR 8 (600µ Black dot) **maximum at 01:00**

- playback of these two tracks without audible disturbance
 playing time for: Fingerprint ≥ 10 seconds
 Black dot from 00:50 to 01:10
- jump forward/backward (search) within a reasonable time

For all other sets
 use CD-DA SBC 444A4822 397 30245
 TR 14 (600µ Black dot) **maximum at 01:15**
 TR 19 (Fingerprint)
 TR 10 (1000µ wedge)

- playback of all these tracks without audible disturbance
 playing time for: 1000µ wedge ≥ 10 seconds
 Fingerprint ≥ 10 seconds
 Black dot from 01:05 to 01:25
- jump forward/backward (search) within a reasonable time

②

CUSTOMER INFORMATION

It is proposed to add an addendum sheet to the set which informs the customer that the set has been checked carefully - but no fault was found.

The problem was obviously caused by a scratched, dirty or copy-protected CD. In case problems remain, the customer is requested to contact the workshop directly.

The lens cleaning (method ③) should be mentioned in the addendum sheet.

The final wording in national language as well as the printing is under responsibility of the Regional Service Organizations.

④

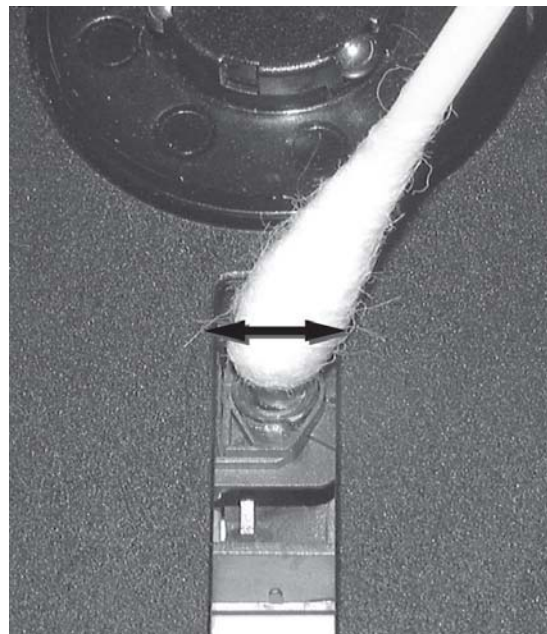
LIQUID LENS CLEANING

Before touching the lens it is advised to clean the surface of the lens by blowing clean air over it. This to avoid that little particles make scratches on the lens.

Because the material of the lens is synthetic and coated with a special anti-reflectivity layer, cleaning must be done with a non-aggressive cleaning fluid. It is advised to use "Cleaning Solvent

The actuator is a very precise mechanical component and may not be damaged in order to guarantee its full function. Clean the lens gently (don't press too hard) with a soft and clean cotton bud moistened with the special lens cleaner.

The direction of cleaning must be in the way as indicated in the picture below.



Software version check & upgrade

Upgrade software

1. Press SYSTEM key to set to operation setup page, display is as below

```
--Common Setting Page--
TV Mode
Display Language
Screen Protection
```

2. Pressing the key of up, down, left, right to original setup page

```
--Original Setting Page--
TV Set standard
Sound
Subtitle
Language Chosen by Disk
Age Controlling
Factory Setting
```

3. Enter the password "811502", TV can display the model software date and area number

```
Ver : MCD268 / xxxx
Date mm dd yyyy
Time hh : mm : ss
Region code x
```

MPEG version check

1. Downloading the firmware for Philips support website

<http://www.philips.com/support>

2. Prepare as uploading CD.

3. Load the CD in the CD tray.

4. TV screen shows

```
Aptitude remove
```

```
Upgrade?
Start by pressing PLAY
Upgrading
File copying
```

CPU version check

1. Keep PLAY/PAUSE and STOP buttons (on the set) while plug in the power cord, TV screen show

```
MCD268 Vxx
```

Upgrade software

Upgrade software

1. Installing the upgrade disk, DVD player can be upgraded automatically, which display as below:

```
Upgrade file detected
Upgrade?
Press PLAY to start
Upgrading
```

Make the playback setting after the DVD motorized door opening automatically and showing OK to upgrade.

2. Pressing the SYSTEM can be set to the general setting page, which display as below:

```
--General setup page--
TV Display
OSD language
Screen saver
```

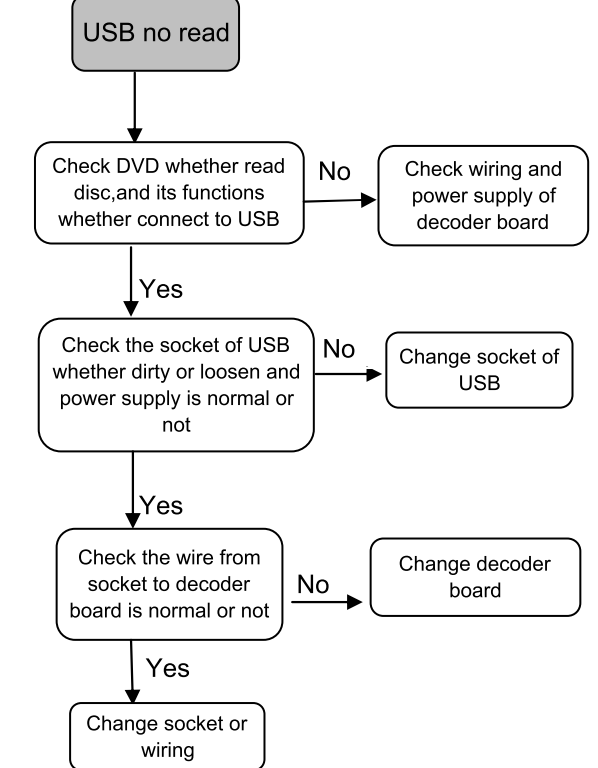
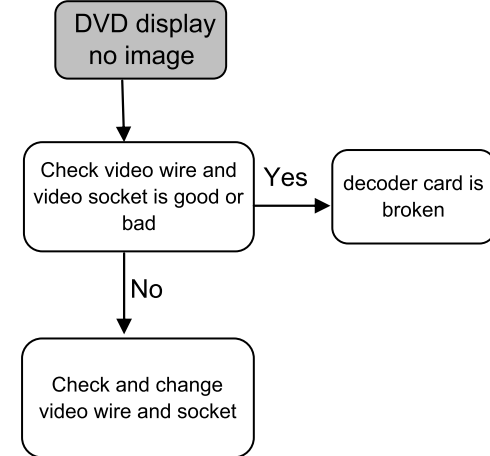
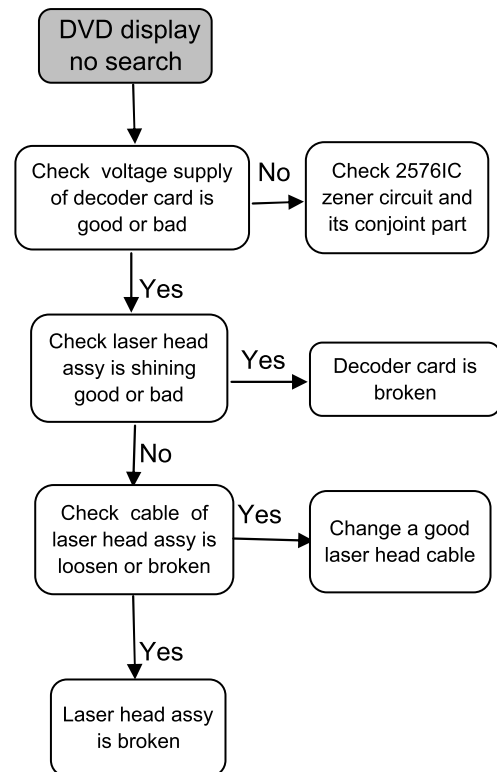
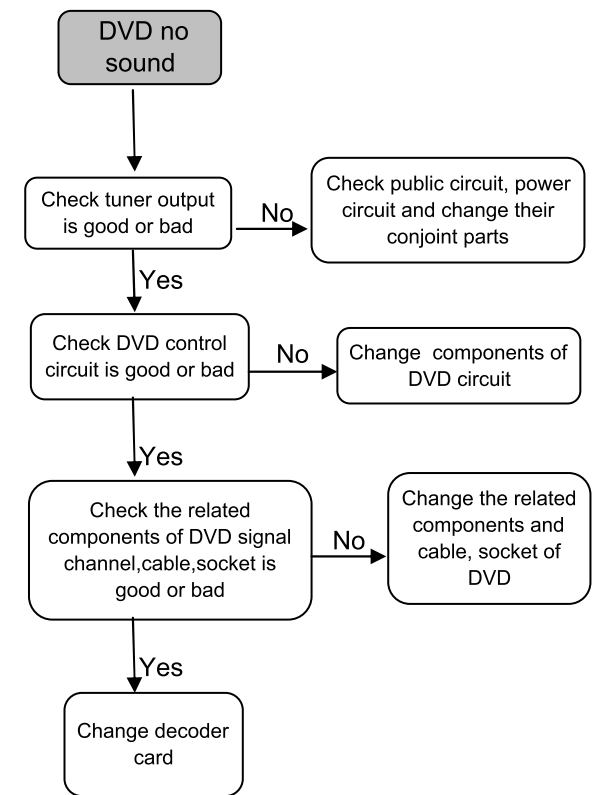
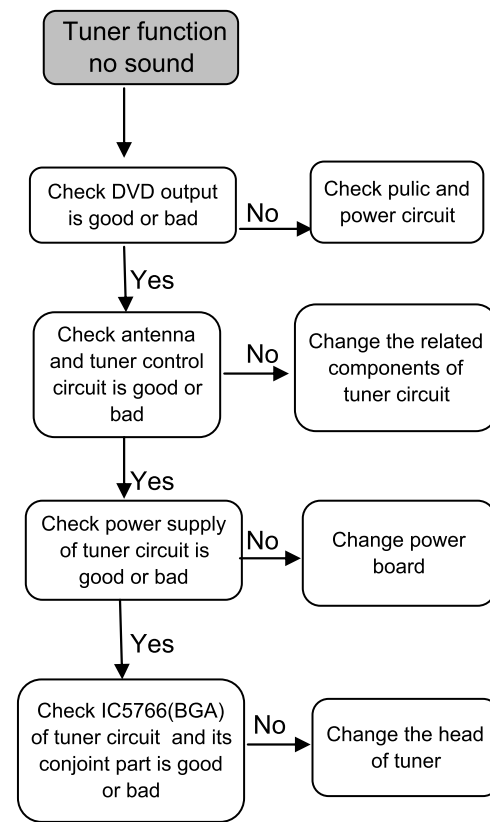
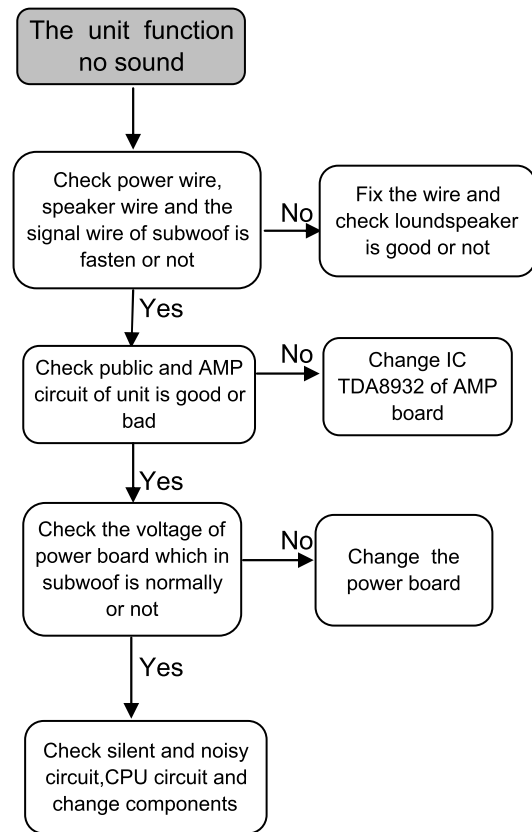
3. Pressing the key of left, right, up, right to original setting page, which display as below:

```
--Preference page--
TV type
Audio
Subtitle
Disc menu
Parental
Default
```

4. Pressing the key of left, right, up, right to move to the "Playback" and then pressing OK to confirm which means OK to upgrade the "Playback".

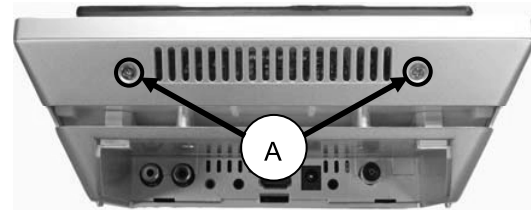
```
--Preference page--
TV type
Audio
Subtitle
Disc menu
Parental
Reset
```


Malfunction Check Chart



Disassembly Diagram

A.Loosen screws 3×8FA(2PCS)



B.Use a flat screw driver to prize the position of lock of rubber foot where the position of right angle



C.keep on moving the blade (it's about 5mm width) to position of 45mm, and press it, then open the position of lock



D.Keep on moving the blade to position of 60mm again,and press it ,then open the position of lock



E.Keep on moving the blade to position of 60mm again, and press it, then open the position of lock.



F.Prize the position of lock on the top angle.



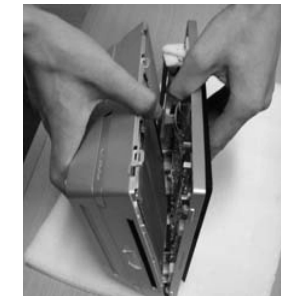
G.Near the position of DVD door, use the thumb press it.



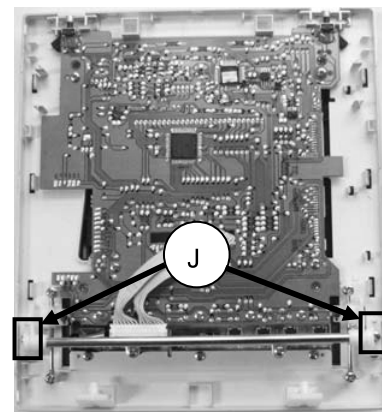
H.Near the position of DVD door, use the thumb press it.



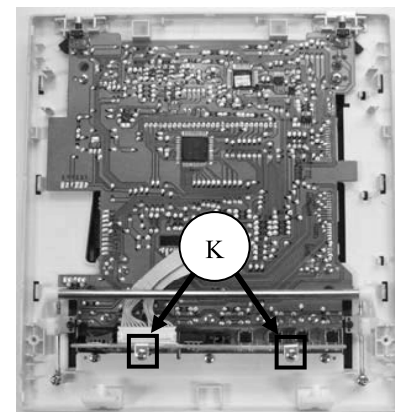
I.Use two hands to open bottom panel.



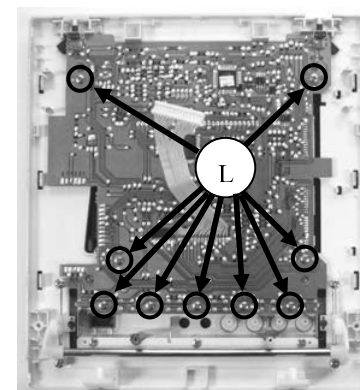
J.Loosen screws 3×8BTH(2PCS) to remove slide plank



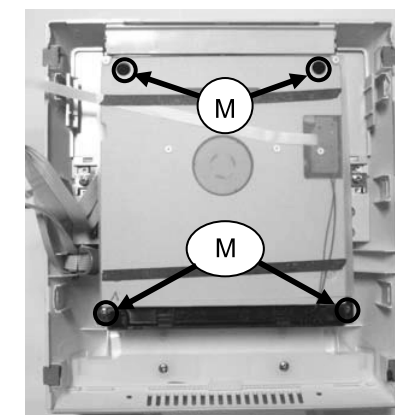
K.Loosen screws 2.6×8BT(2PCS) to remove key board



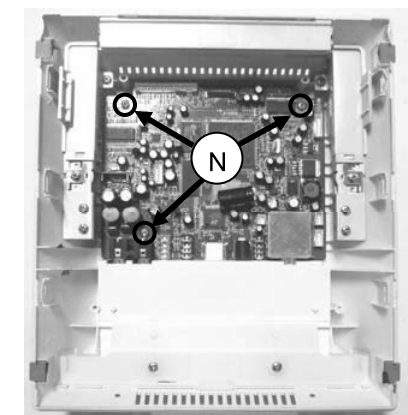
L.Loosen screws 2.6×8PT(9PCS) to remove VFD board



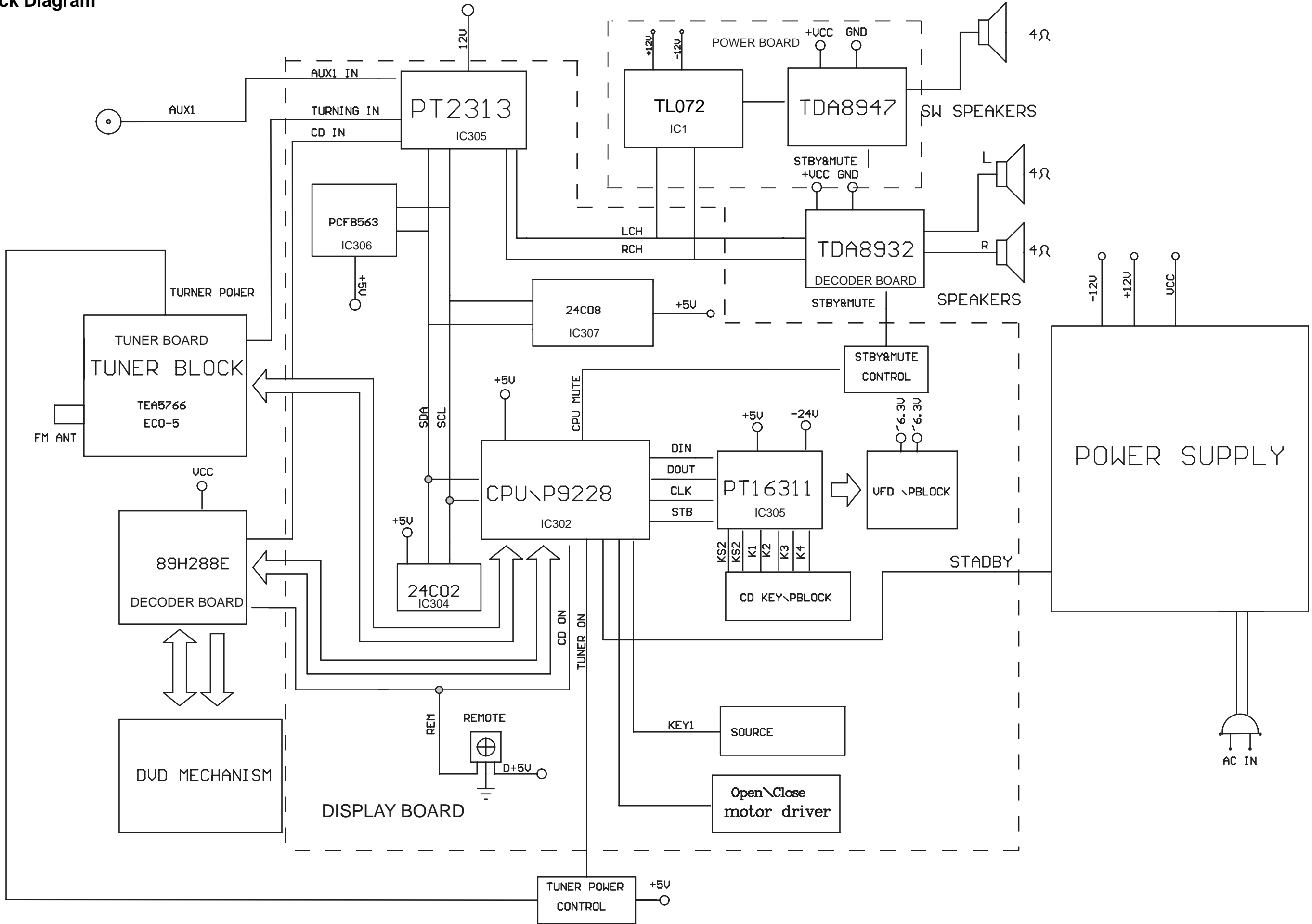
M. Loosen screws 3×18BTH(2PCS)
M1.Loosen screws 3×10PTH(2PCS) to remove mechanism core



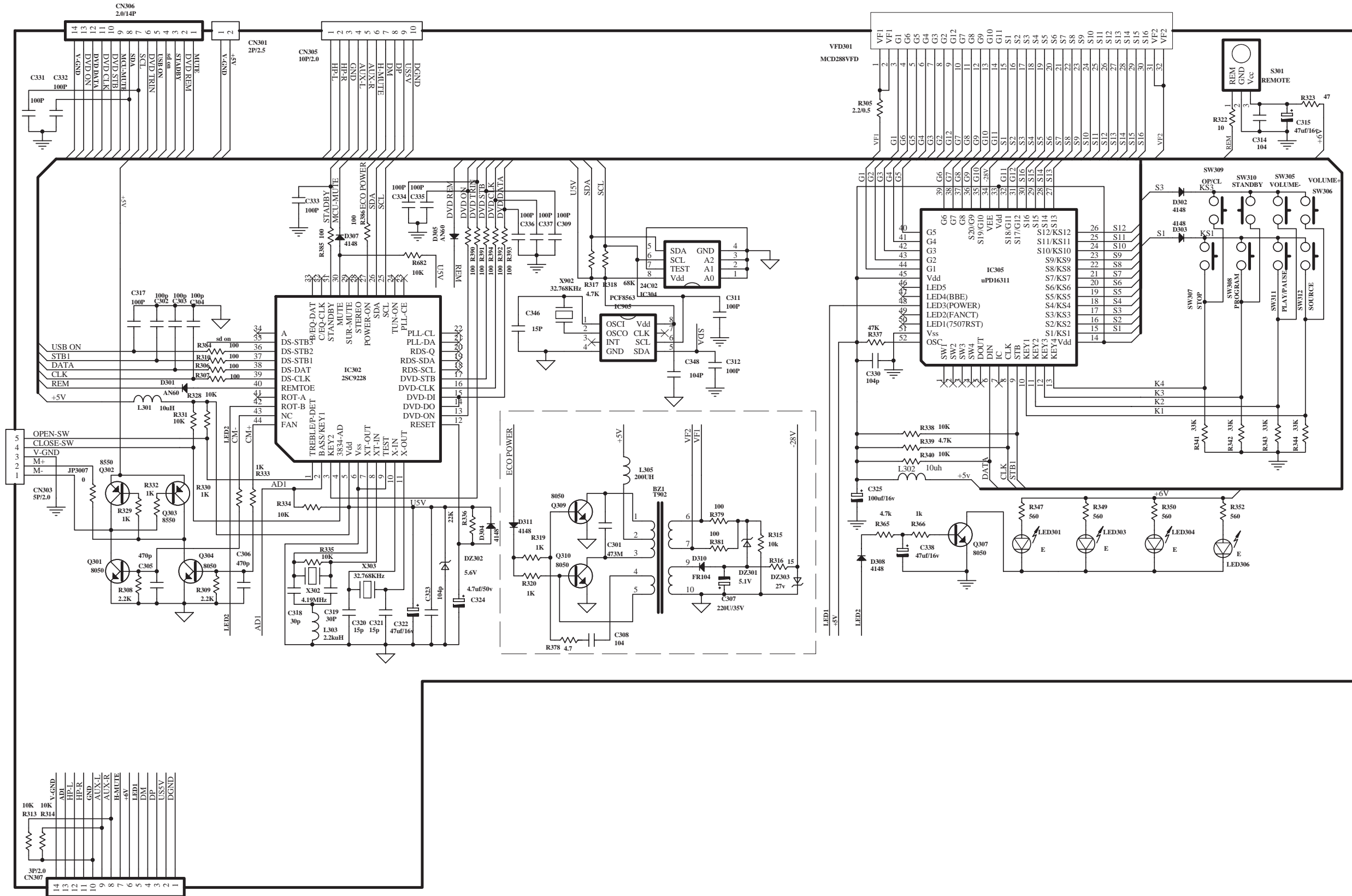
N.Loosen screws 3×6BTH(2PCS) to remove decoder board



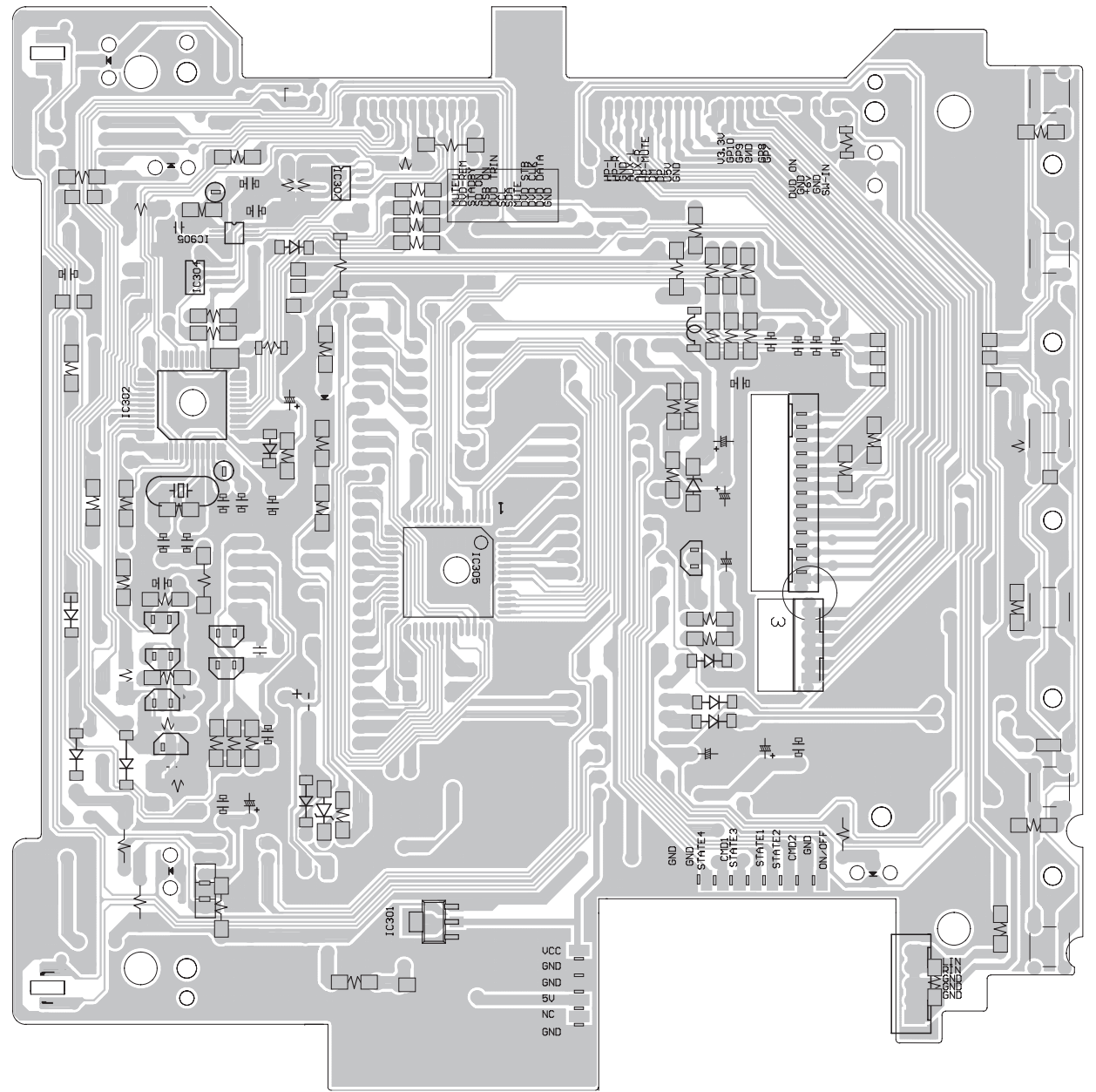
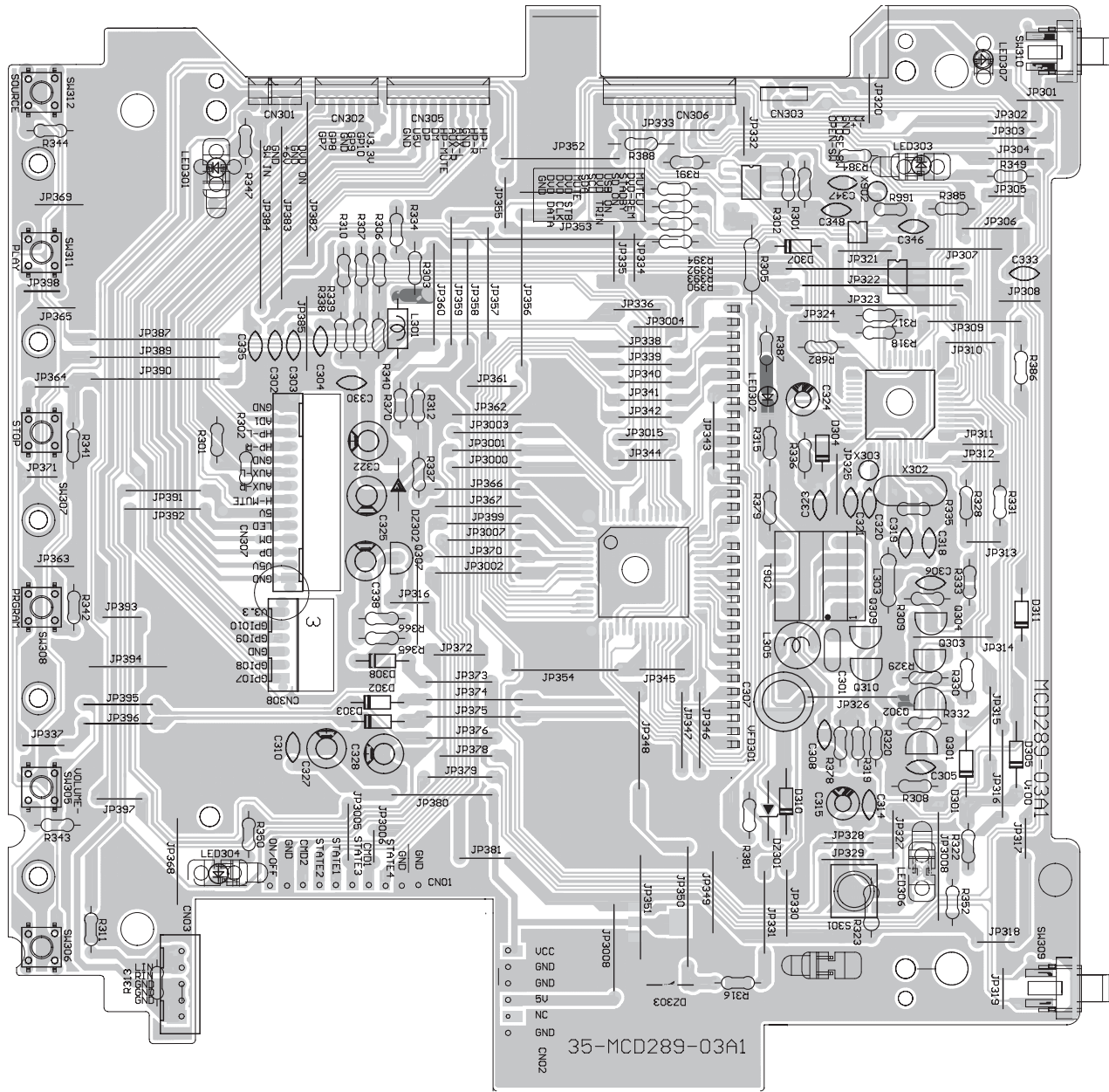
Block Diagram



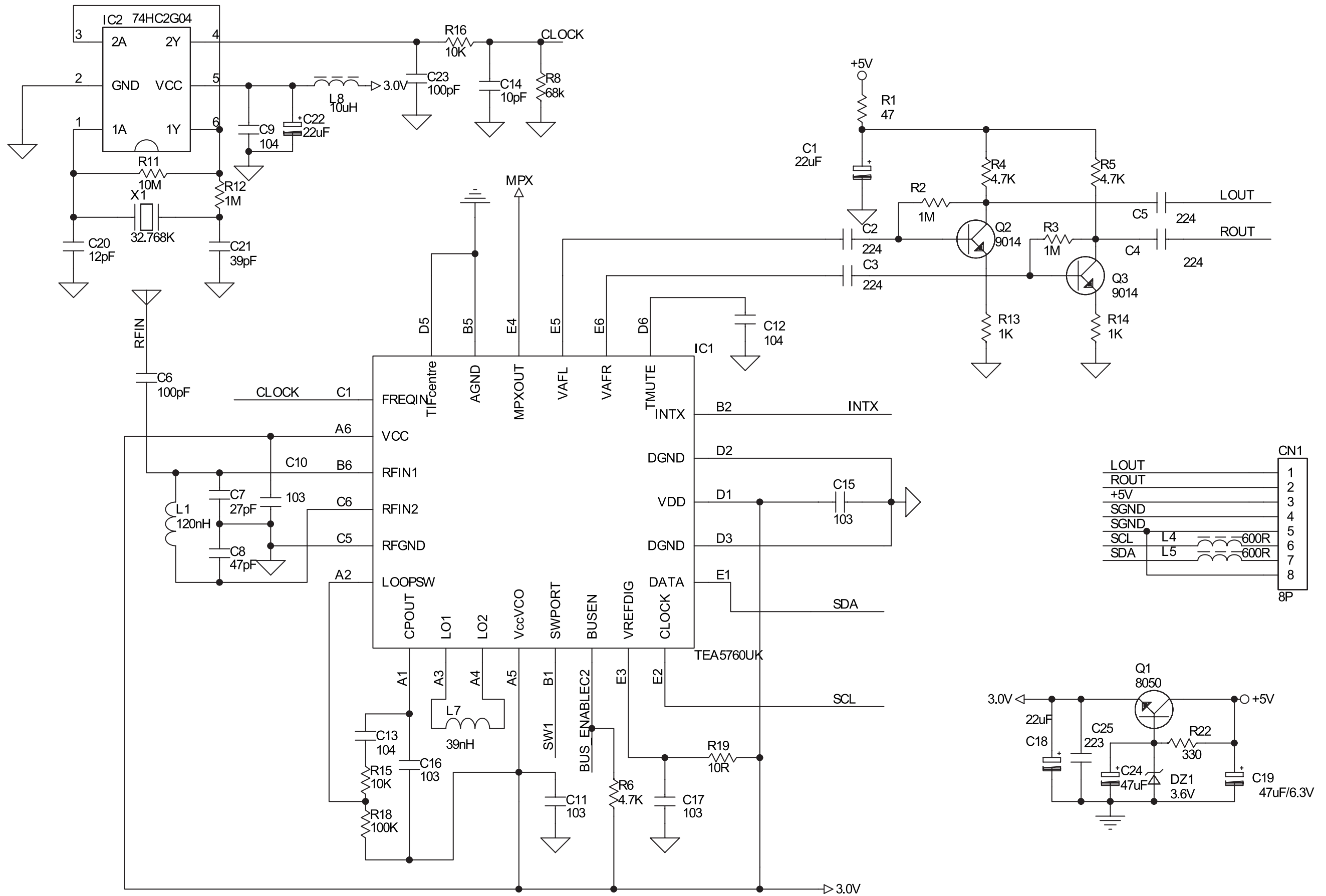
VFD BOARD - Circuit Diagram



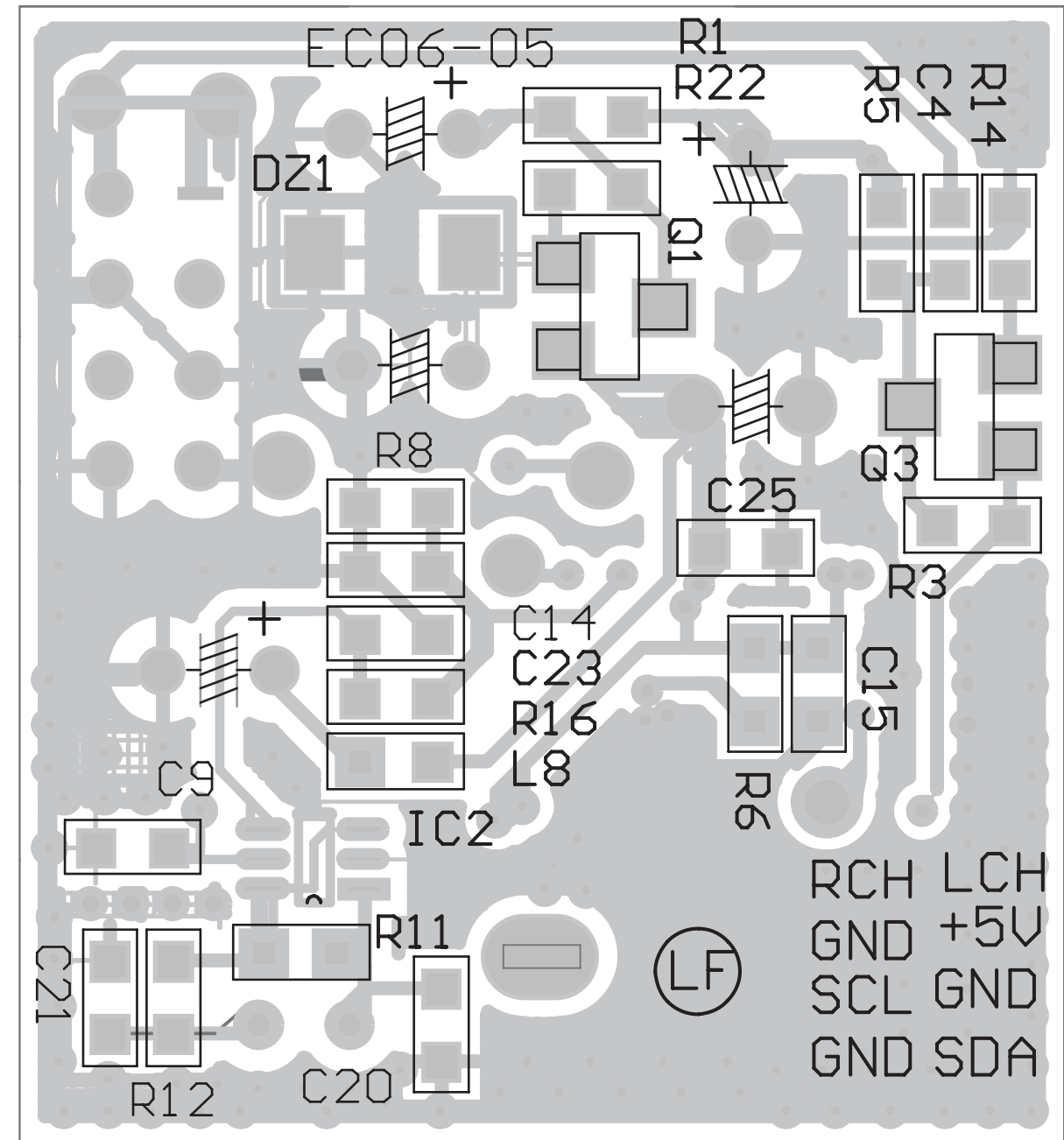
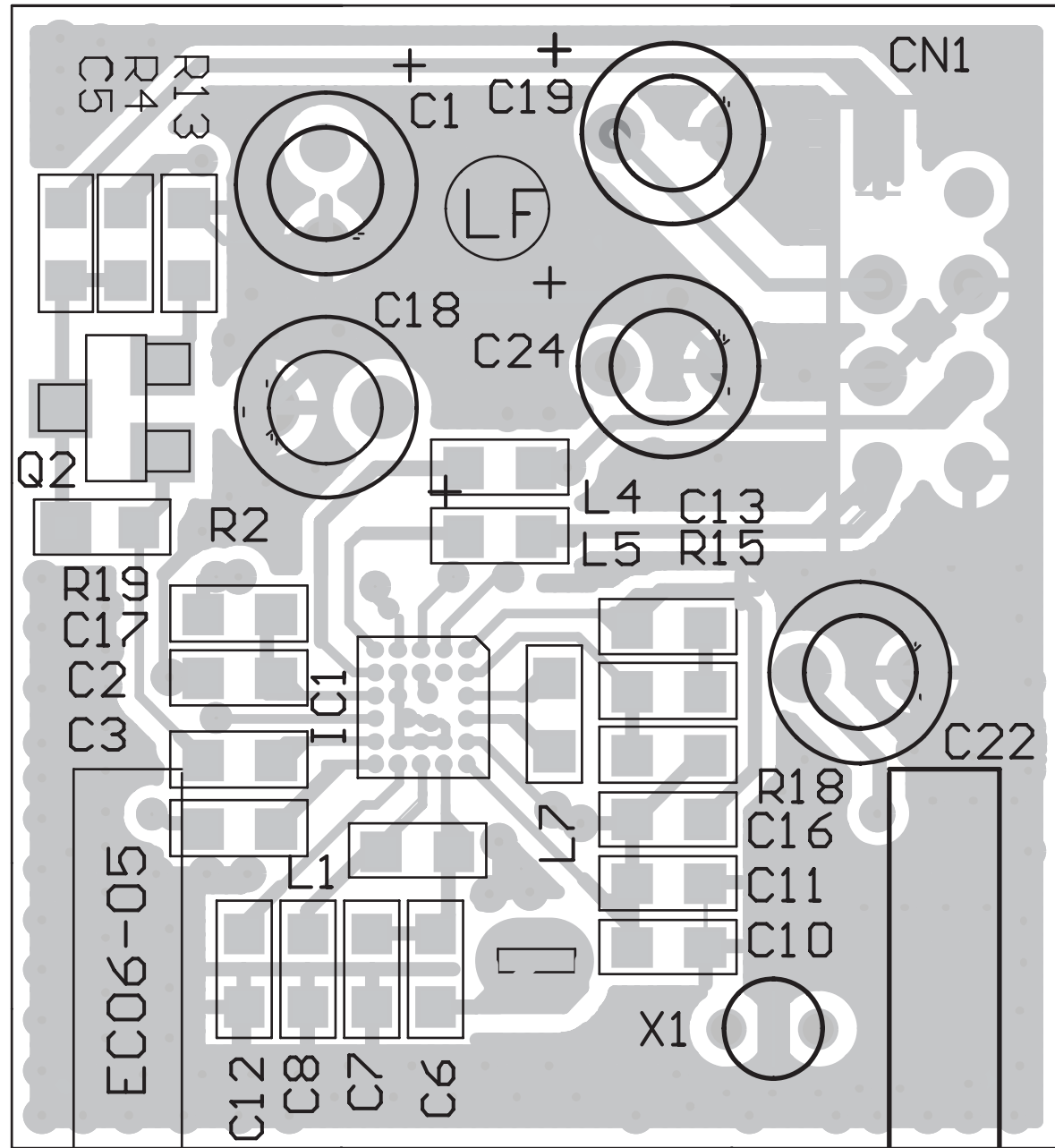
VFD BOARD - Layout Diagram



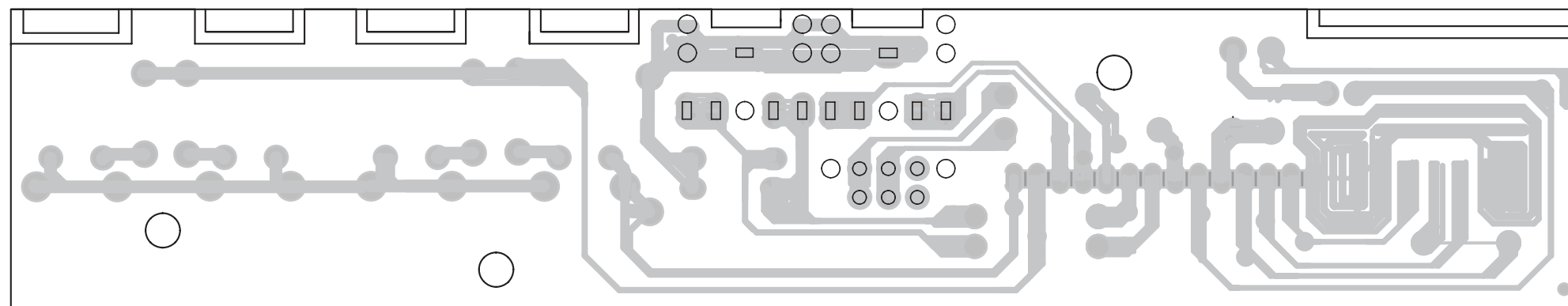
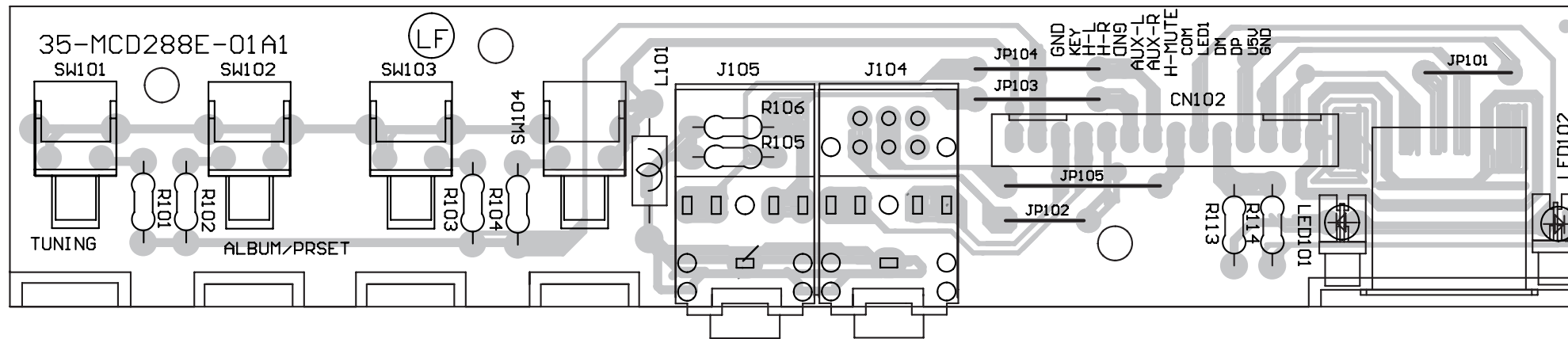
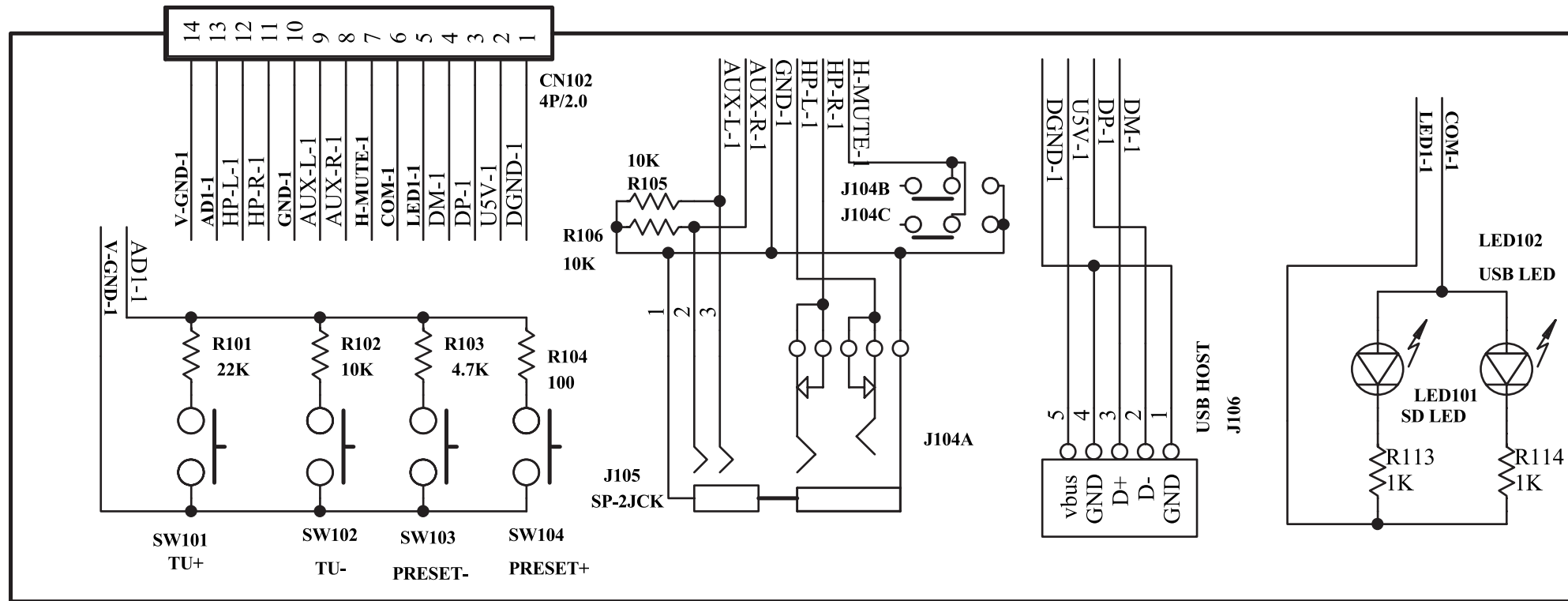
TUNER BOARD - Circuit Diagram



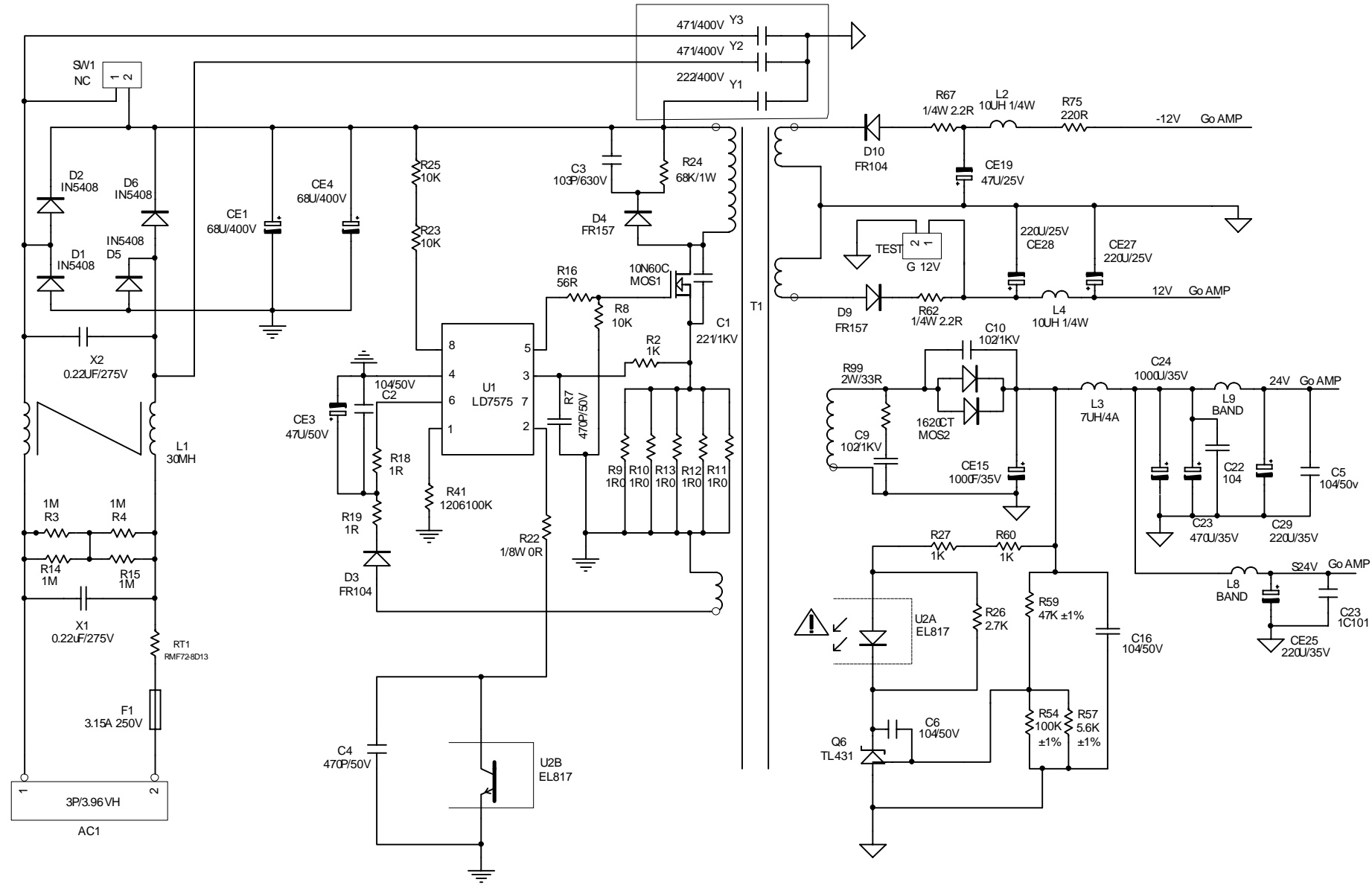
TUNER BOARD - Layout Diagram



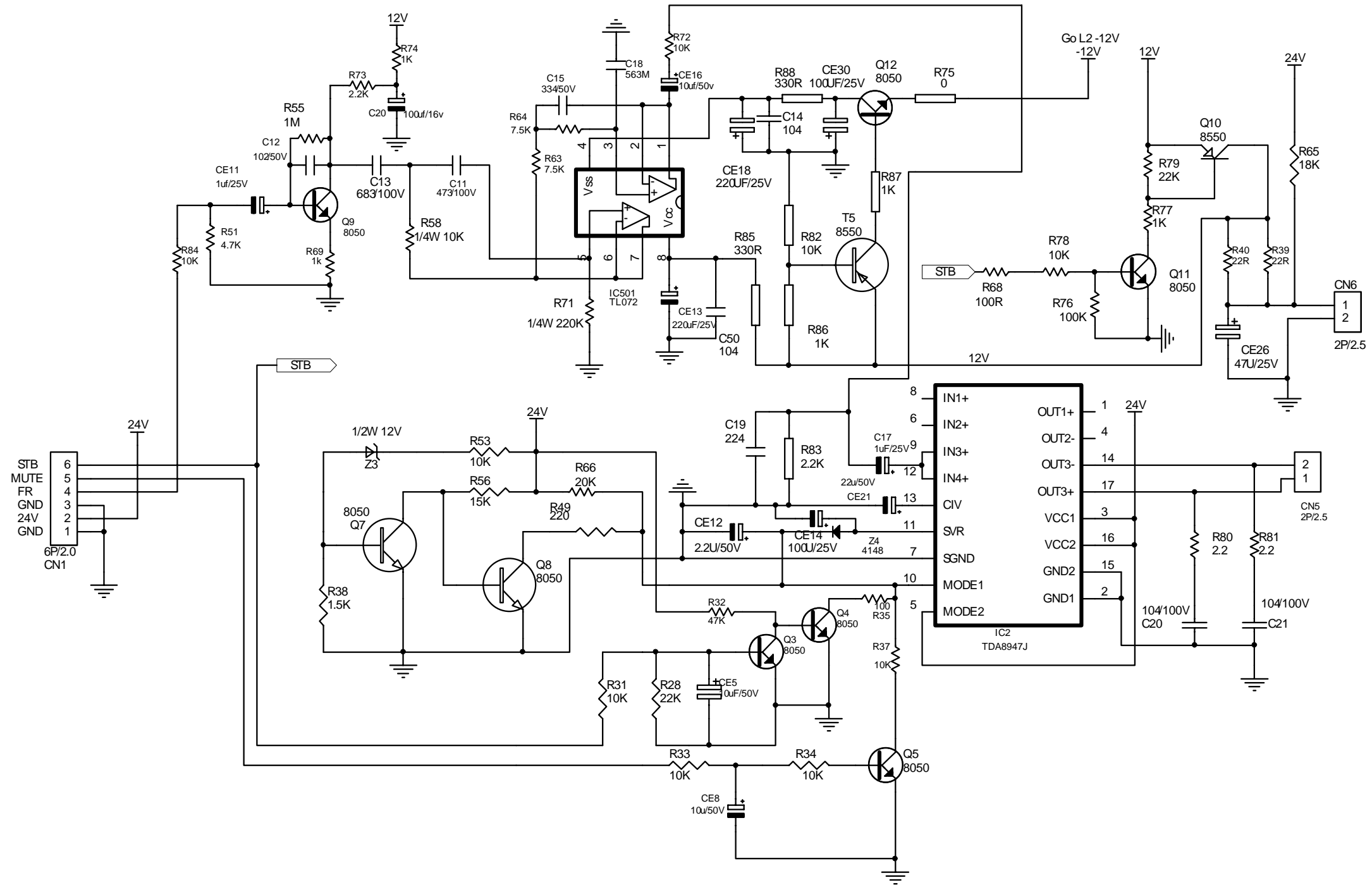
HEADPHONE BOARD



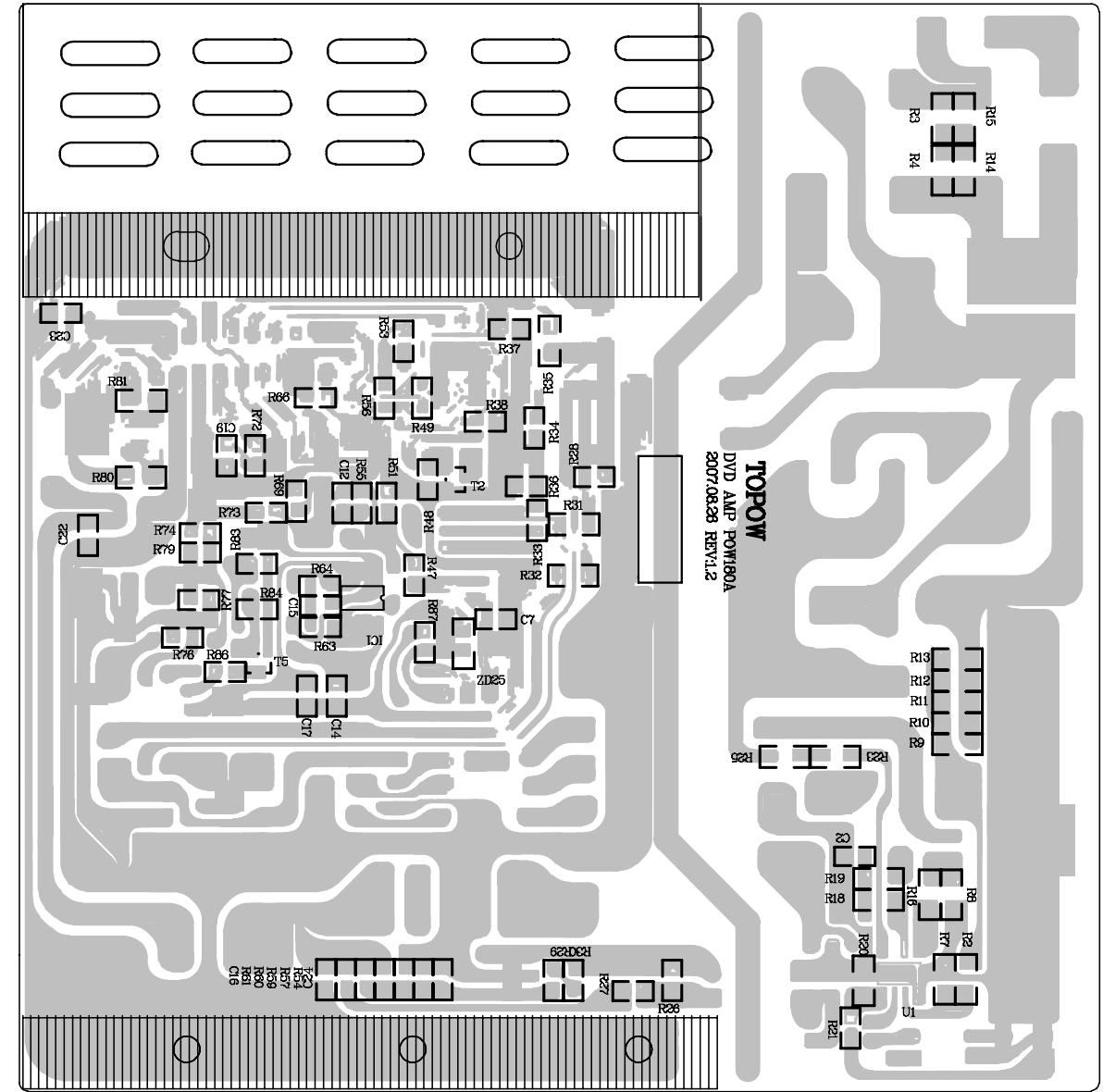
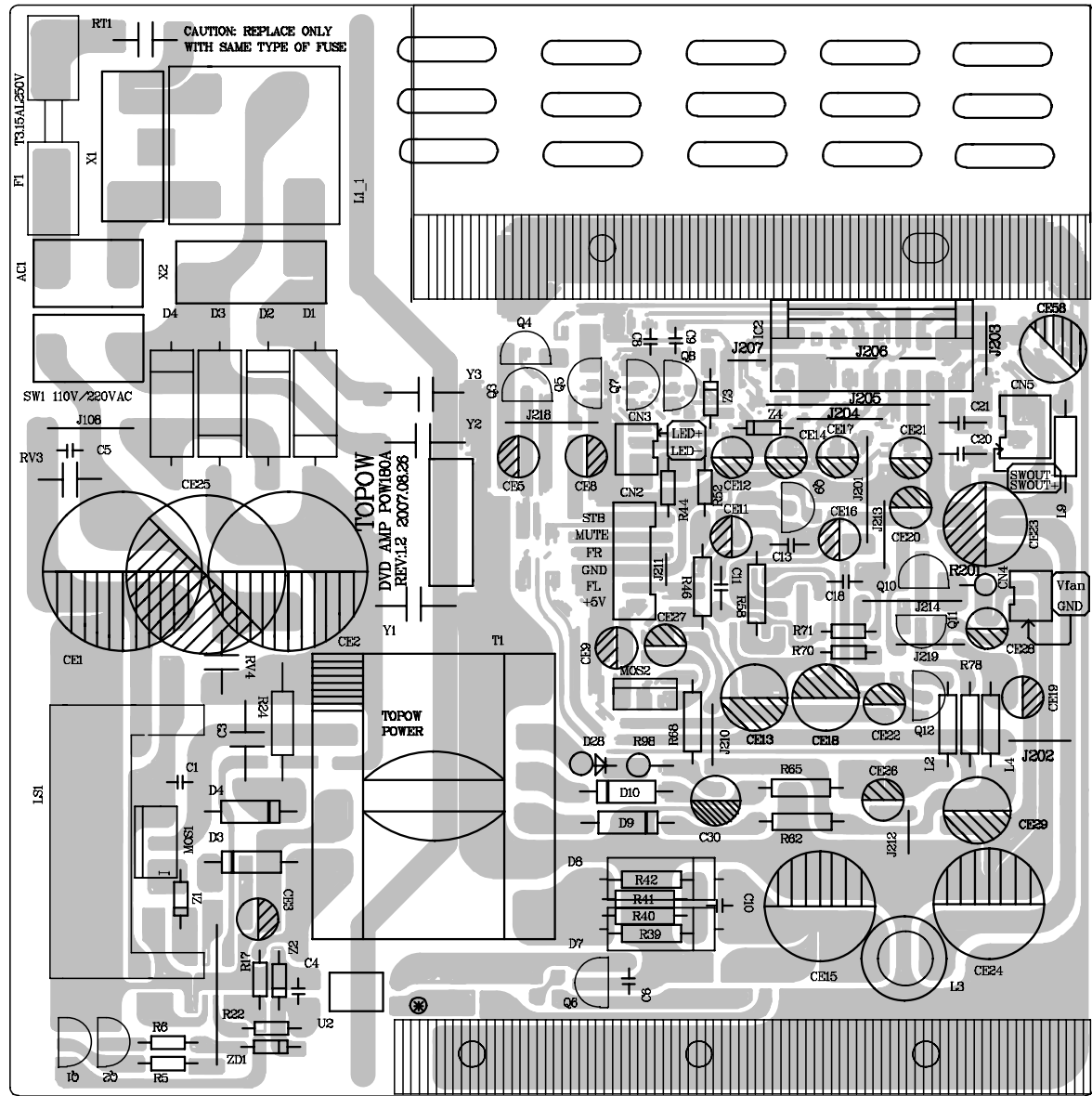
POWER BOARD - Circuit Diagram - 1



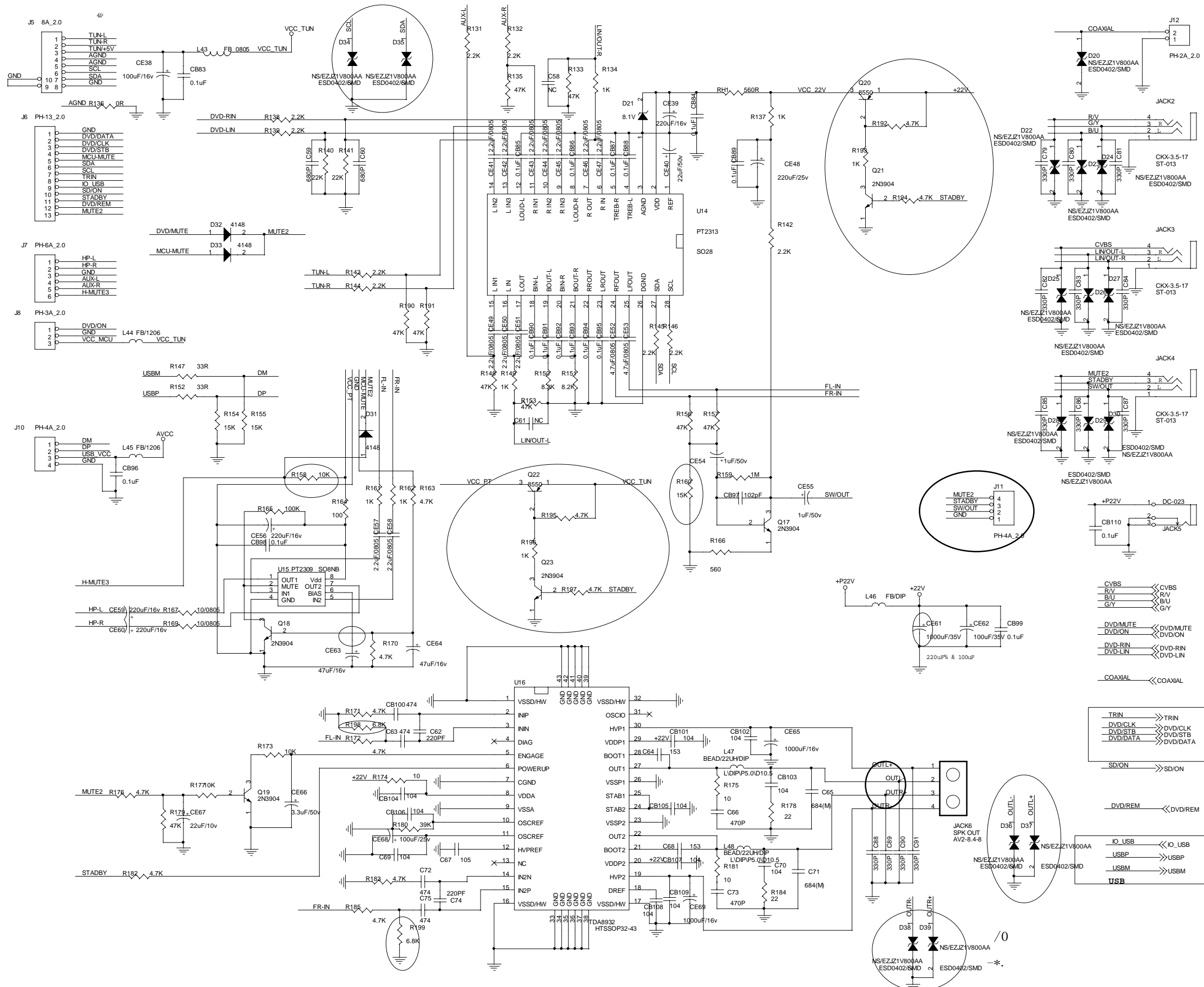
POWER BOARD - Circuit Diagram - 2



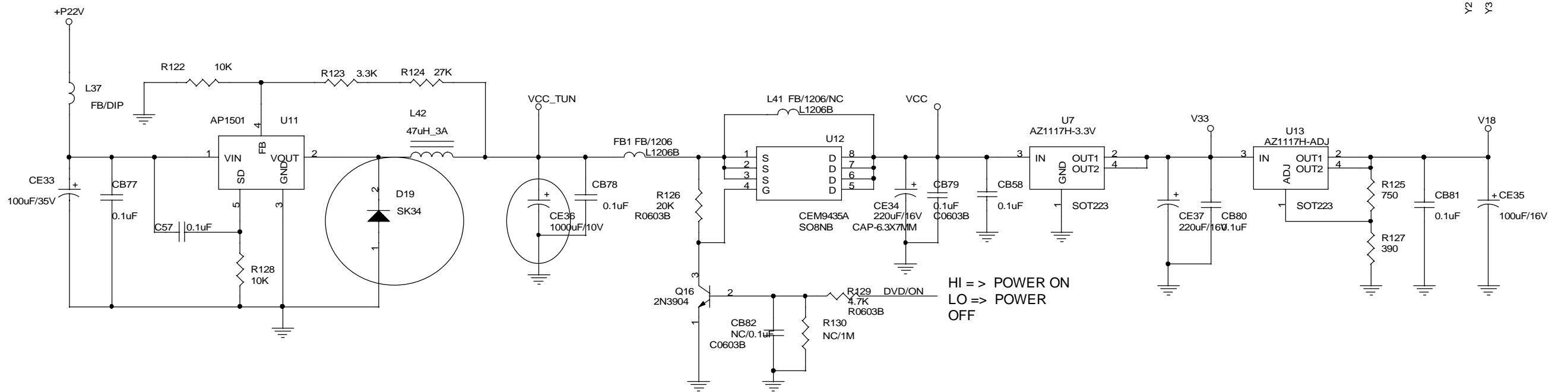
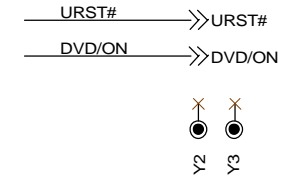
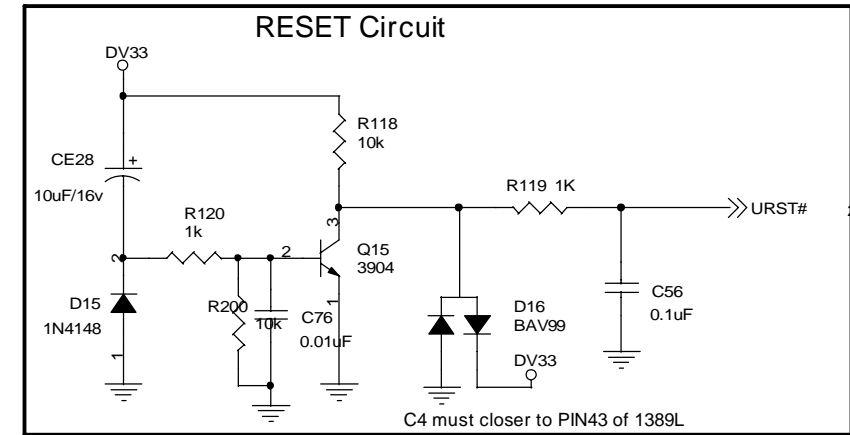
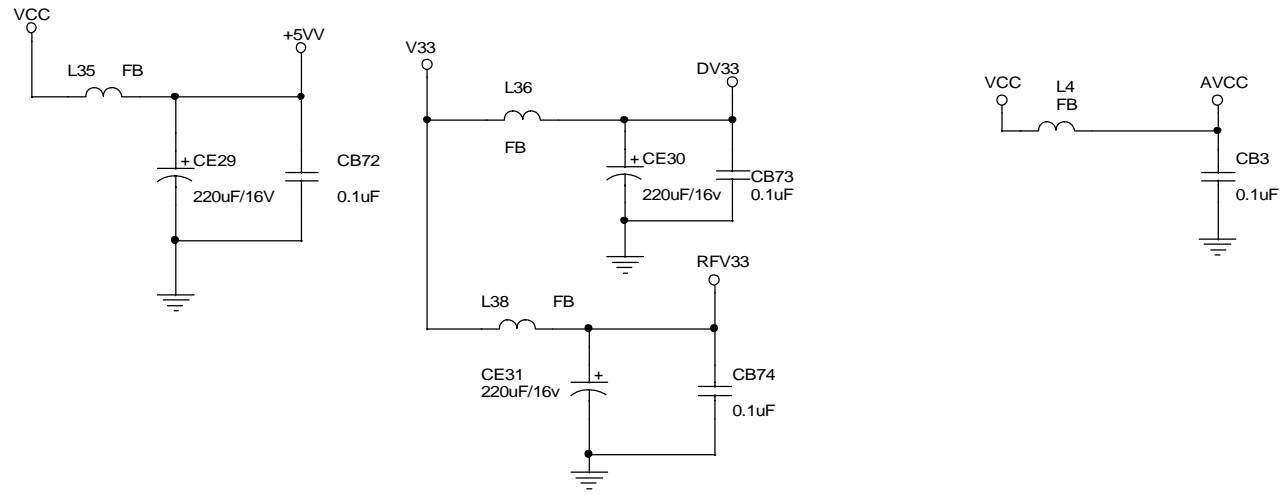
POWER BOARD - Layout Diagram



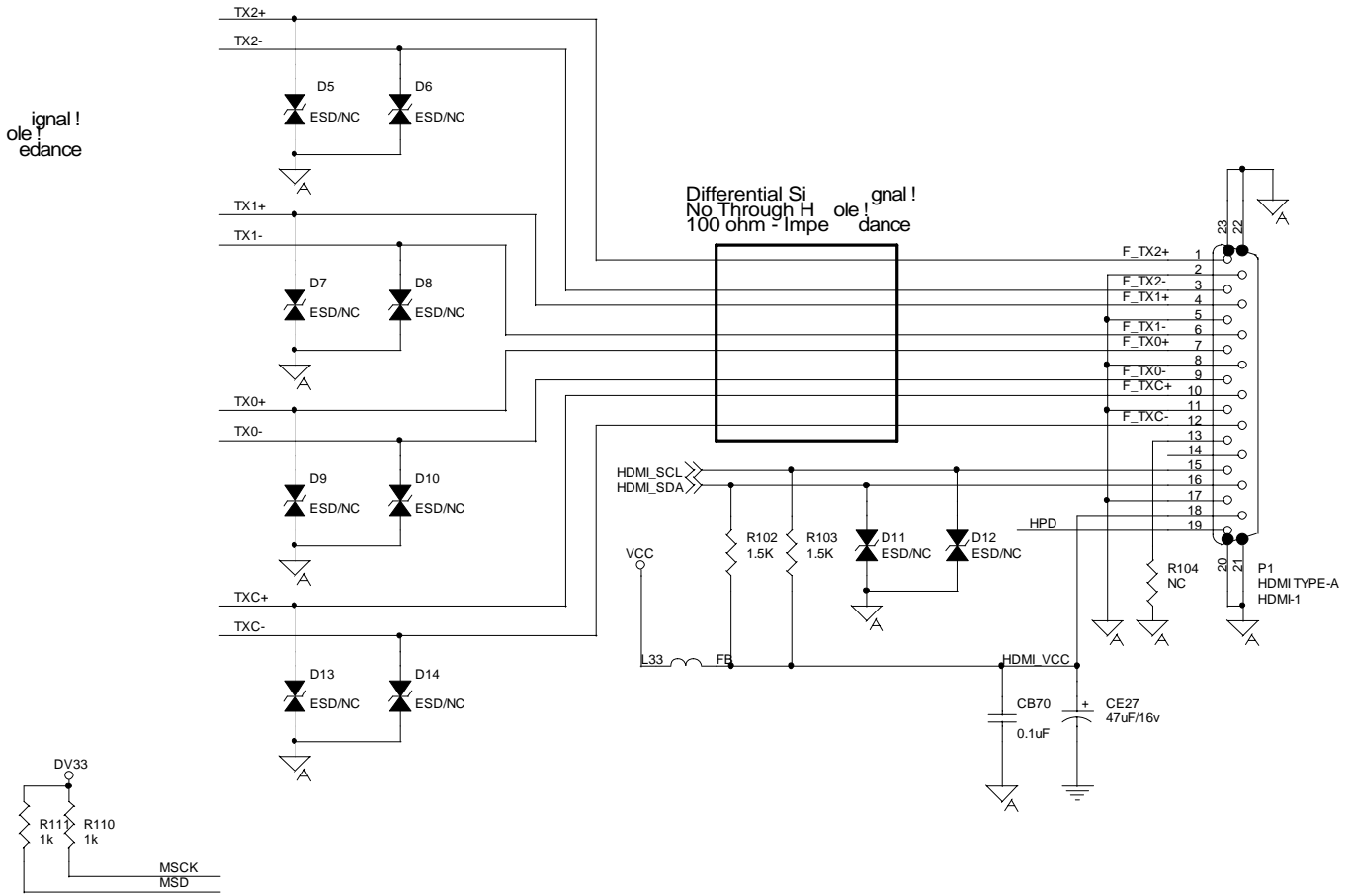
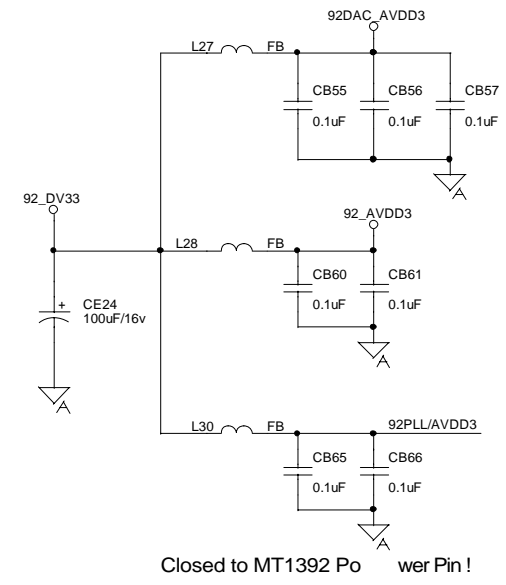
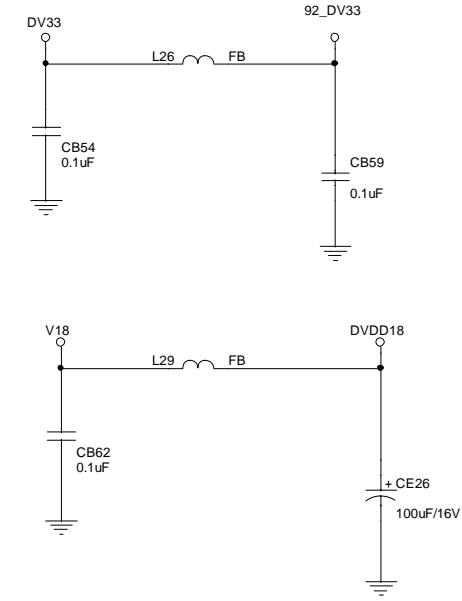
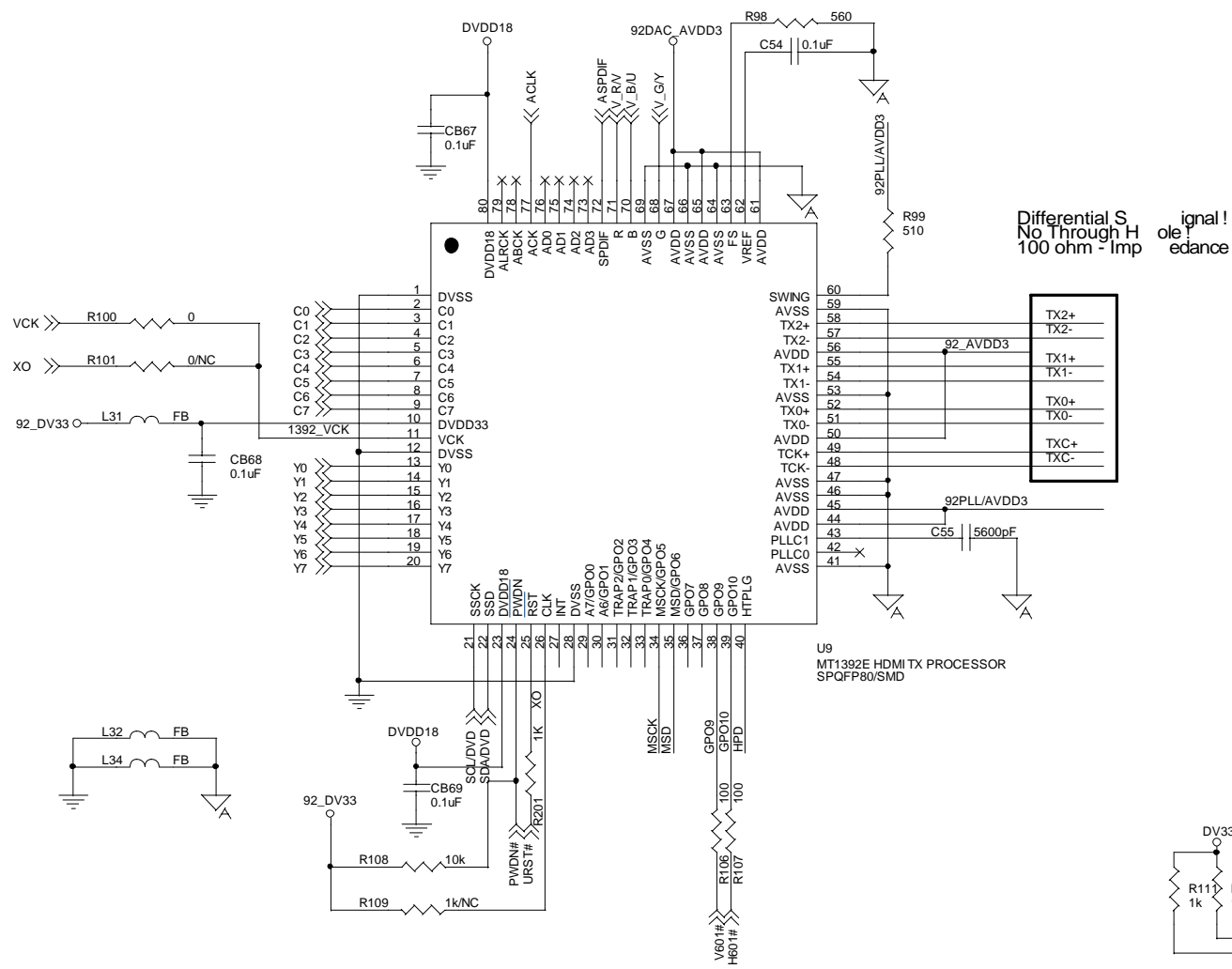
DECODER BOARD - Circuit Diagram - 1



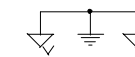
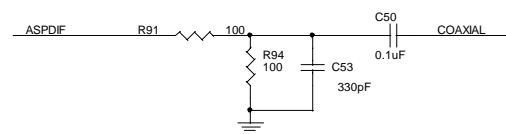
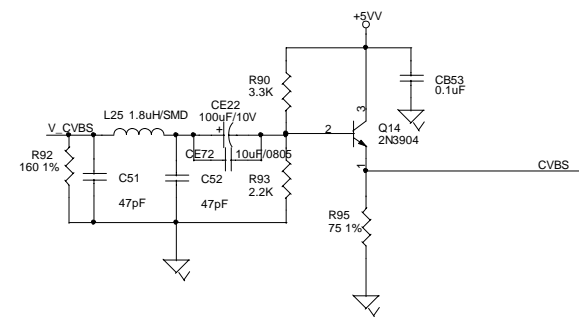
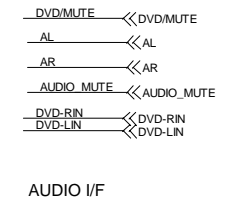
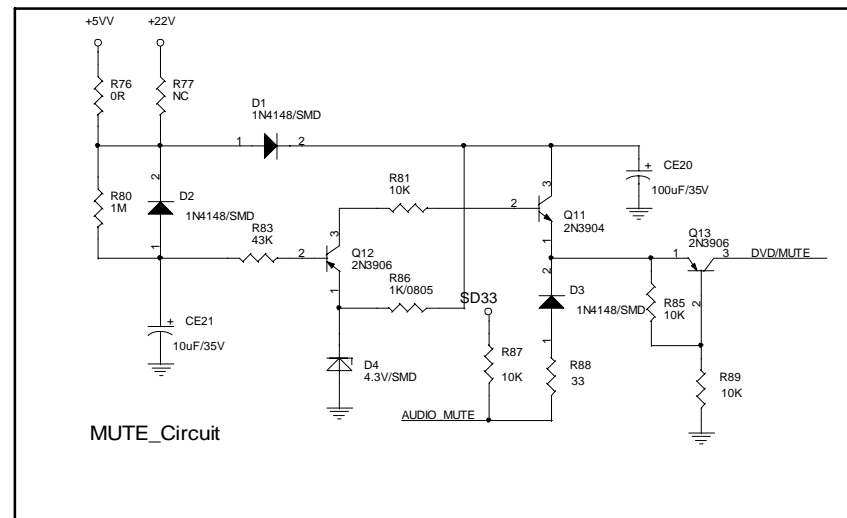
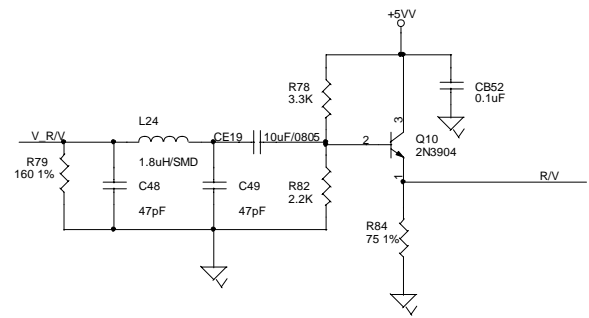
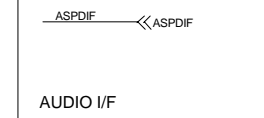
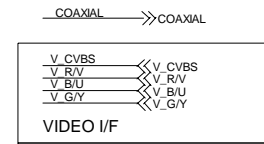
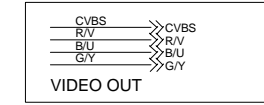
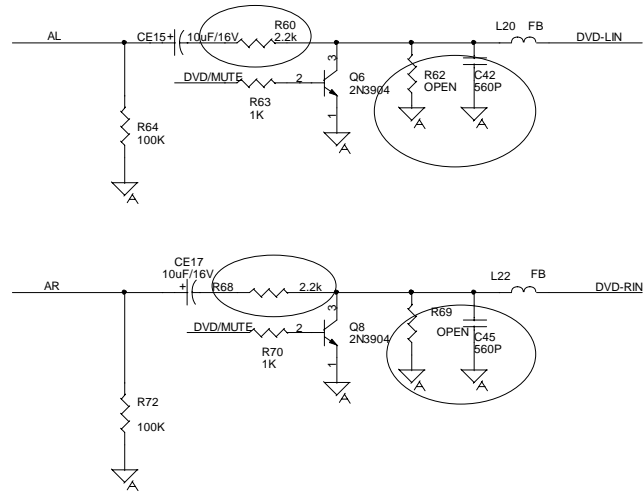
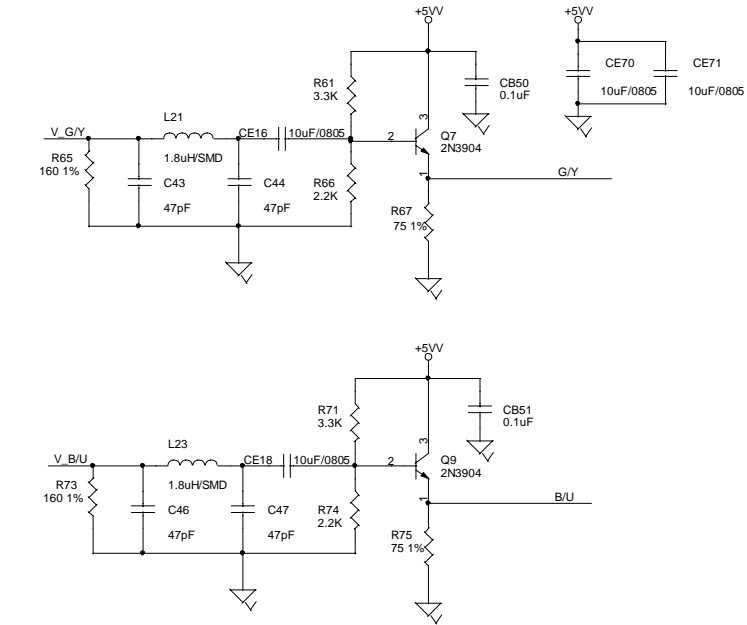
DECODER BOARD - Circuit Diagram - 2



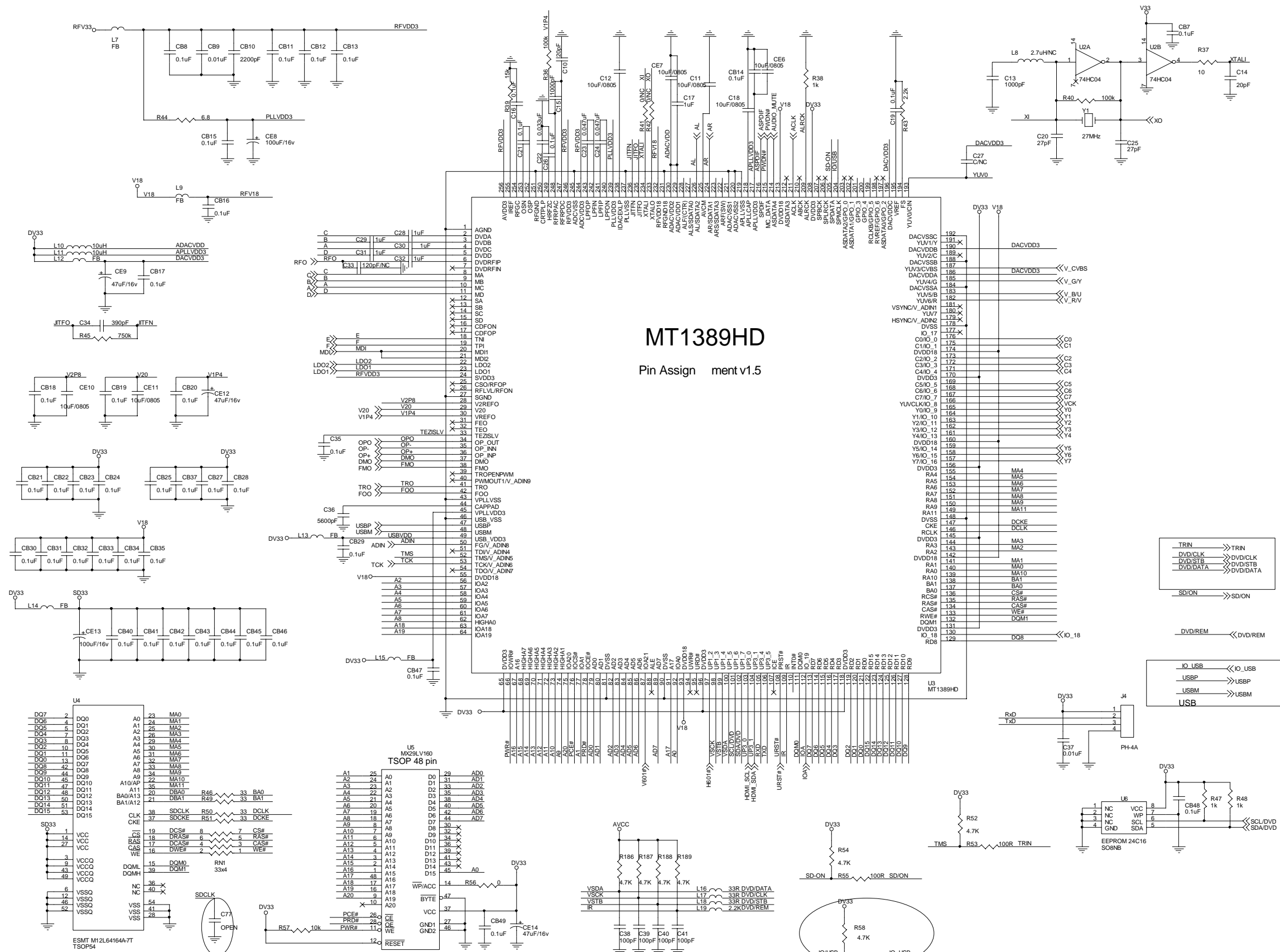
DECODER BOARD - Circuit Diagram - 3



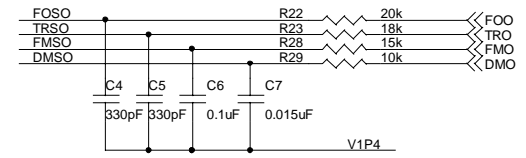
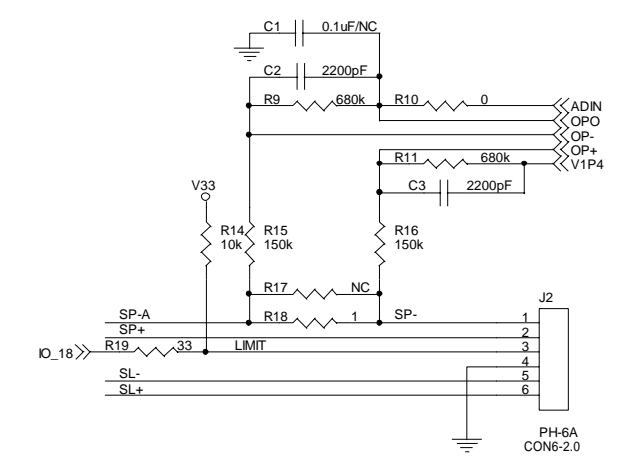
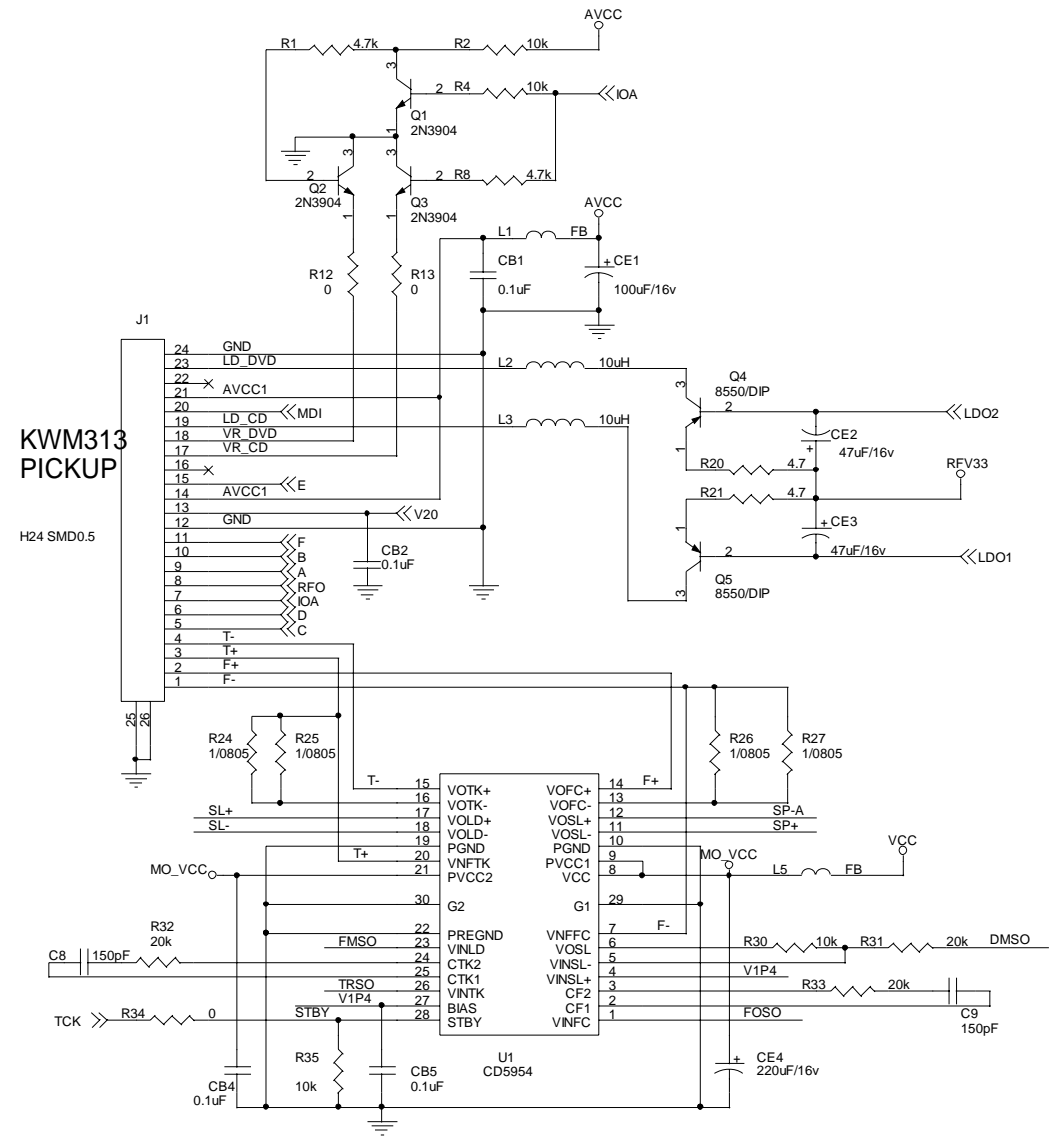
DECODER BOARD - Circuit Diagram - 4



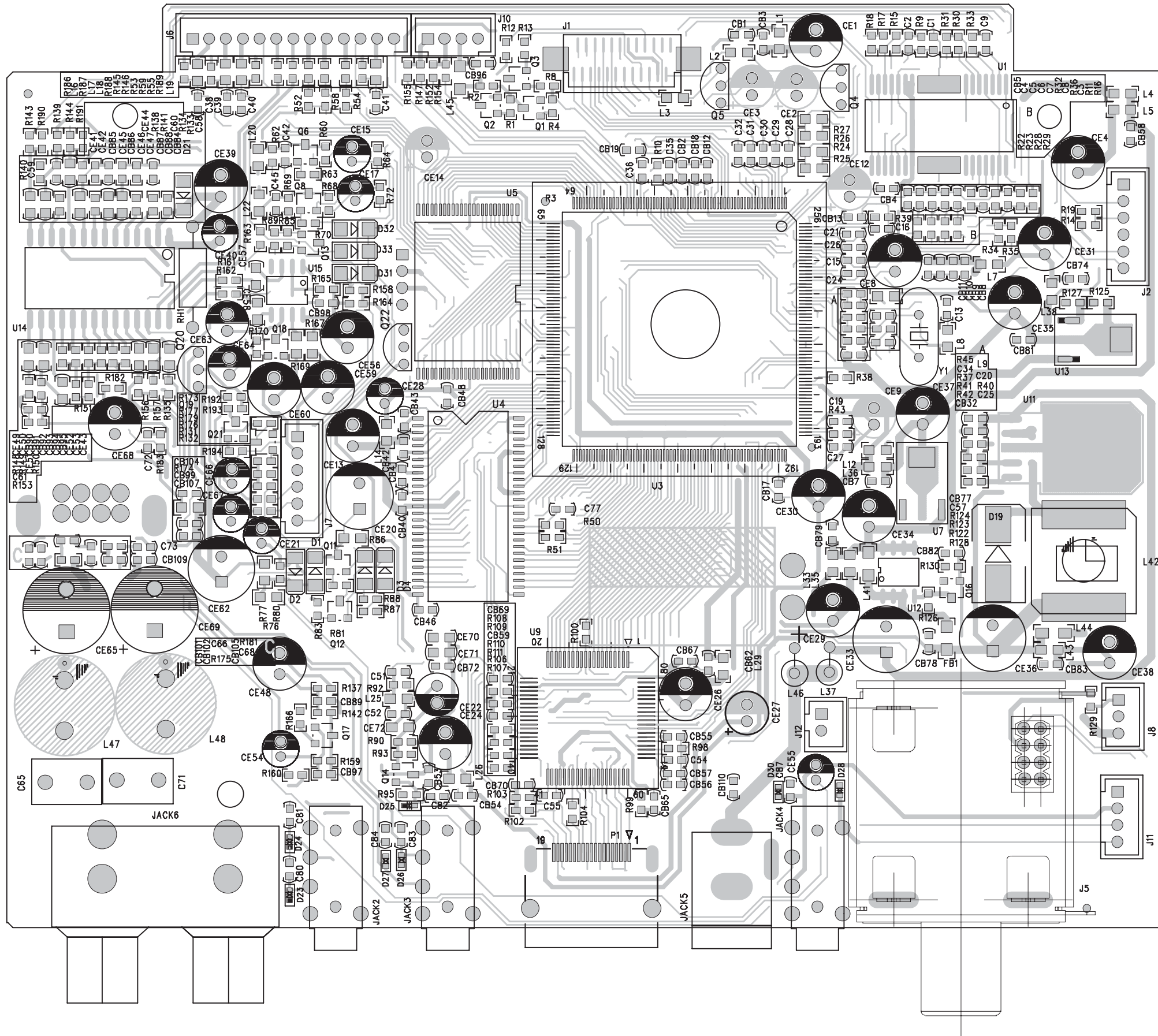
DECODER BOARD - Circuit Diagram - 5



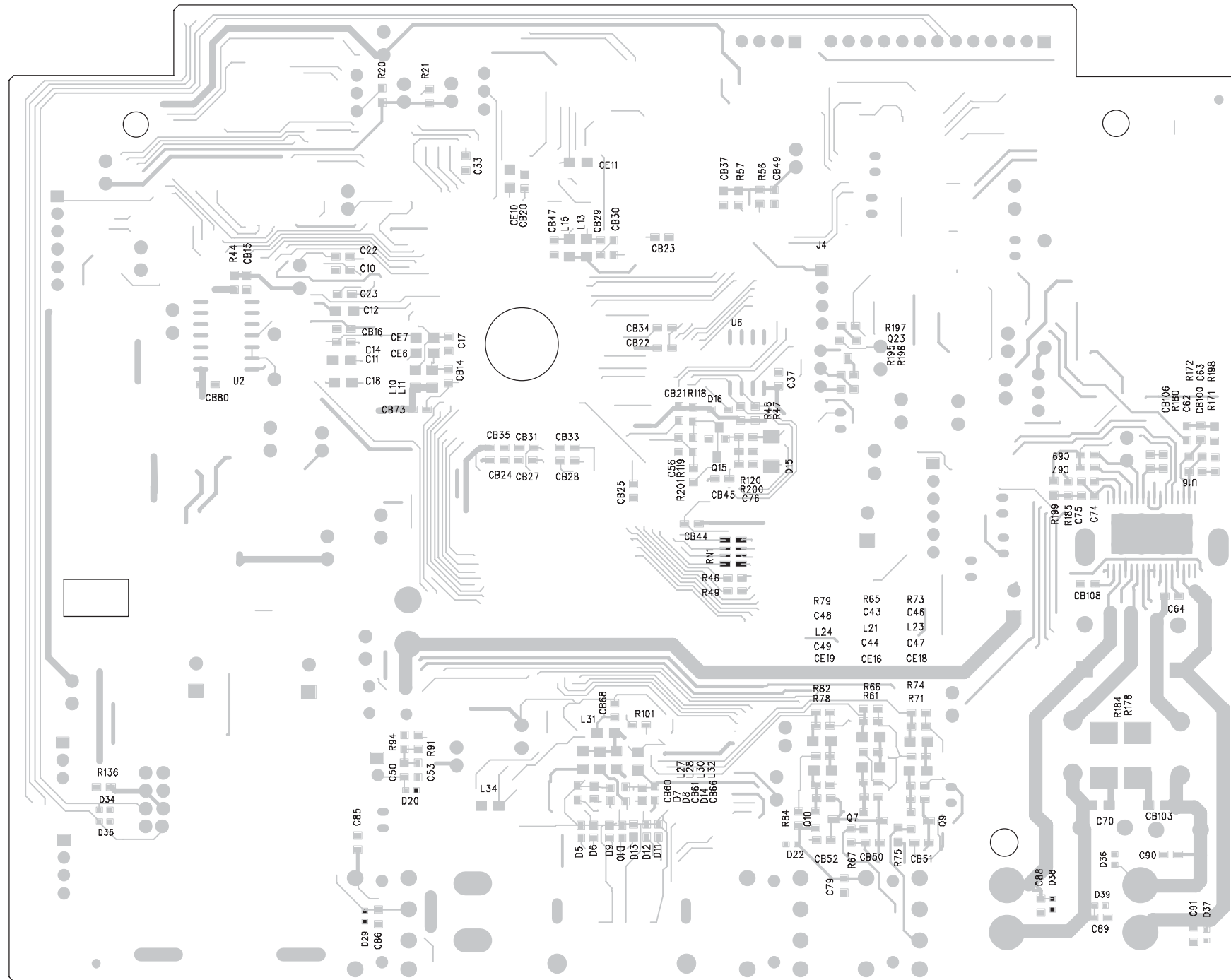
DECODER BOARD - Circuit Diagram - 6



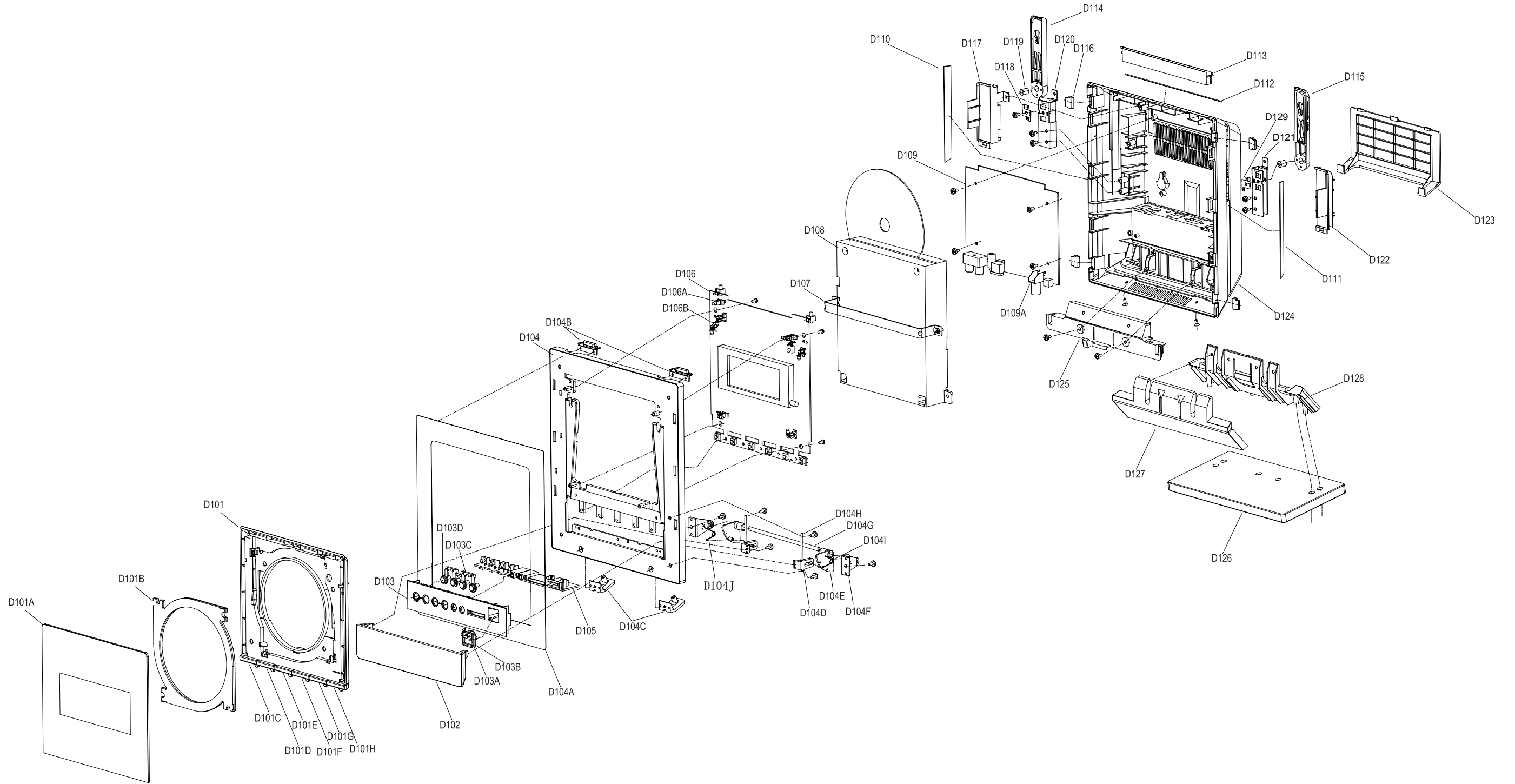
DECODER BOARD - Layout Diagram - 1



DECODER BOARD - Layout Diagram - 2



EXPLODE VIEW



ACCESSORIES PARTS LIST

1A	996510013864	RCA CABLE 3P+D.3.5PLUG 1.5M	
1B	994000004892	FM ANT L=1.5M	
	2	996510013875	REMOTE CONTROL ASSY
	3		SPEAKER BOX ASS'Y
3A	996510013876	SPEAKER BOX ASSY(L)	
3B	996510013877	SPEAKER BOX ASSY(R)	
	4	996510013878	SUBWOOFER SPEAKER BOX ASSY

ELECTRICAL PARTS FOR AMP

D101	996510013871	MAIN DISPLAY FRAME ASSY
D103	996510010934	FUNCTION BUTTON ASSY
D104	996510011050	PANEL CONFIGURATION ASSY'
D105	996510010928	HEADPHONE BOARD ASSY
D106	996510018616	MCD288E MAINF DISPLAY BOARD
D108	996510000988	DVD MODULE (DISC ASS'Y MCD288)
D109	996510013870	DECODER ASSY
D109A	996510008524	TUNER BOARD PCB ASSY ECO6-05
D126A	996510010933	MAIN BRACKET FOOT ASSY

MECHANICAL PARTS FOR AMP

CABLE	996510010886	FLAT FLEXIBLE CABLE
D102	996510013874	PUSH-DOOR PC(For 268)
D110	996510010913	MAINFRAME TOP DECORATION(L)
D111	996510010914	MAINFRAME TOP DECORATION(R)
D112	996510010943	MAINFRAME TOP DECORATION
D113	996510010937	CONNECT PART
D114	996510010938	SPEAKER ARM(L)
D115	996510010939	SPEAKER ARM(R)
D117	996510013862	SPEAKER BOX BRACKET COVER(L)
D118	996510010882	SPRING PRESS-PIECE
D122	996510013863	SPEAKER BOX BRACKET COVER(R)
D123	996510013873	TERMINAL COVER
D124	996510013872	BACK COVER(For268)
D125	996510011051	PRESS PIECE HIPS

Note: Only these parts mentioned in the list are normal service parts.

Factory Partlist

LOCATION	DESCRIPTION	QTY.	UNIT
	MCD268/93 MAIN UNIT PARTS ASS'Y	1	SET
D106	MCD268/55/98 MAIN DISPLAY BOARD ASS'Y	1	SET
T902	? TRANSFORMER EE13 5V	1	PCS
R322	CARBON FILM RESISTOR 10 1/8W J-52	1	PCS
R306	CARBON FILM RESISTOR 100 1/8W J-52	1	PCS
R307	CARBON FILM RESISTOR 100 1/8W J-52	1	PCS
R310	CARBON FILM RESISTOR 100 1/8W J-52	1	PCS
R379	CARBON FILM RESISTOR 100 1/8W J-52	1	PCS
R381	CARBON FILM RESISTOR 100 1/8W J-52	1	PCS
R384	CARBON FILM RESISTOR 100 1/8W J-52	1	PCS
R385	CARBON FILM RESISTOR 100 1/8W J-52	1	PCS
R386	CARBON FILM RESISTOR 100 1/8W J-52	1	PCS
R390	CARBON FILM RESISTOR 100 1/8W J-52	1	PCS
R392	CARBON FILM RESISTOR 100 1/8W J-52	1	PCS
R393	CARBON FILM RESISTOR 100 1/8W J-52	1	PCS
R394	CARBON FILM RESISTOR 100 1/8W J-52	1	PCS
R338	CARBON FILM RESISTOR 10K 1/8W J-52	1	PCS
R340	CARBON FILM RESISTOR 10K 1/8W J-52	1	PCS
R328	CARBON FILM RESISTOR 10K 1/8W J-52	1	PCS
R331	CARBON FILM RESISTOR 10K 1/8W J-52	1	PCS
R334	CARBON FILM RESISTOR 10K 1/8W J-52	1	PCS
R335	CARBON FILM RESISTOR 10K 1/8W J-52	1	PCS
R315	CARBON FILM RESISTOR 10K 1/8W J-52	1	PCS
R314	CARBON FILM RESISTOR 10K 1/8W J-52	1	PCS
R301	CARBON FILM RESISTOR 10K 1/8W J-52	1	PCS
R371	CARBON FILM RESISTOR 10K 1/8W J-52	1	PCS
R302	CARBON FILM RESISTOR 10K 1/8W J-52	1	PCS
R372	CARBON FILM RESISTOR 10K 1/8W J-52	1	PCS
R682	CARBON FILM RESISTOR 10K 1/8W J-52	1	PCS
R316	CARBON FILM RESISTOR 15 1/8W J-52	1	PCS
R305	CARBON FILM RESISTOR 5.6 1W J-52	1	PCS
R308	CARBON FILM RESISTOR 2.2K 1/8W J-52	1	PCS
R309	CARBON FILM RESISTOR 2.2K 1/8W J-52	1	PCS
R391	CARBON FILM RESISTOR 2.2K 1/8W J-52	1	PCS
R317	CARBON FILM RESISTOR 3.3K 1/8W J-52	1	PCS
R341	CARBON FILM RESISTOR 33K 1/8W J-52	1	PCS
R342	CARBON FILM RESISTOR 33K 1/8W J-52	1	PCS
R343	CARBON FILM RESISTOR 33K 1/8W J-52	1	PCS
R344	CARBON FILM RESISTOR 33K 1/8W J-52	1	PCS
R323	CARBON FILM RESISTOR 47 1/8W J-52	1	PCS
R339	CARBON FILM RESISTOR 4.7K 1/8W J-52	1	PCS
R365	CARBON FILM RESISTOR 4.7K 1/8W J-52	1	PCS
R337	CARBON FILM RESISTOR 47K 1/8W J-52	1	PCS
R378	CARBON FILM RESISTOR 4.7 1/8W J-52	1	PCS
R319	CARBON FILM RESISTOR 1K 1/8W J-52	1	PCS
R320	CARBON FILM RESISTOR 1K 1/8W J-52	1	PCS
R366	CARBON FILM RESISTOR 1K 1/8W J-52	1	PCS
R336	CARBON FILM RESISTOR 22K 1/8W J-52	1	PCS
R332	CARBON FILM RESISTOR 390 1/8W J-52	1	PCS
R333	CARBON FILM RESISTOR 390 1/8W J-52	1	PCS
R329	CARBON FILM RESISTOR 390 1/8W J-52	1	PCS
R330	CARBON FILM RESISTOR 390 1/8W J-52	1	PCS
R318	CARBON FILM RESISTOR 68K 1/8W J-52	1	PCS
R388	CARBON FILM RESISTOR 6.2K 1/8W J-52	1	PCS
R347	CARBON FILM RESISTOR 10 1/4W J-52	1	PCS

Factory Partlist

LOCATION	DESCRIPTION	QTY.	UNIT
R349	CARBON FILM RESISTOR 10 1/4W J-52	1	PCS
R350	CARBON FILM RESISTOR 10 1/4W J-52	1	PCS
R352	CARBON FILM RESISTOR 10 1/4W J-52	1	PCS
R303	CARBON FILM RESISTOR 10 1/4W J-52	1	PCS
NAIL BOARD	CERAMIC CAP. 100p 50V K	2	PCS
C302	CERAMIC CAP. 100p 50V K-5 H<7	1	PCS
C303	CERAMIC CAP. 100p 50V K-5 H<7	1	PCS
C304	CERAMIC CAP. 100p 50V K-5 H<7	1	PCS
C333	CERAMIC CAP. 100p 50V K-5 H<7	1	PCS
C335	CERAMIC CAP. 100p 50V K-5 H<7	1	PCS
C308	CERAMIC CAP. 104P 50V K-5	1	PCS
C314	CERAMIC CAP. 104P 50V K-5	1	PCS
C330	CERAMIC CAP. 104P 50V K-5	1	PCS
C348	CERAMIC CAP. 104P 50V K-5	1	PCS
C346	CERAMIC CAP. 15p 50V ±1p-5	1	PCS
C318	CERAMIC CAP. 30p 50V±1p-5	1	PCS
C319	CERAMIC CAP. 30p 50V±1p-5	1	PCS
C305	CERAMIC CAP. 470p 50V K-5	1	PCS
C306	CERAMIC CAP. 470p 50V K-5	1	PCS
C322	ELECTROLYTIC CAP.47u 16V L-5 5X7	1	PCS
C338	ELECTROLYTIC CAP.47u 16V L-5 5X7	1	PCS
C328	ELECTROLYTIC CAP.47u 16V L-5 5X7	1	PCS
C323	ELECTROLYTIC CAP.47u 16V L-5 5X7	1	PCS
C325	ELECTROLYTIC CAP.100u 16V L-5 105°C 6.3X	1	PCS
C324	ELECTROLYTIC CAP.10u 25V L-5 4X5	1	PCS
C315	ELECTROLYTIC CAP. 220u 16V L-5 6.3X5	1	PCS
C307	ELECTROLYTIC CAP.220u 35V L 8X11.5/12	1	PCS
C301	NONINDUCTIVE CAP.104J 100V K	1	PCS
L301	AXIAL FIXED INDUCTOR 10u 52	1	PCS
L305	FIXED INDUCTOR 200U 6X5	1	PCS
D301	DIODE IN60-52	1	PCS
D305	DIODE IN60-52	1	PCS
D302	DIODE 4148-52	1	PCS
D303	DIODE 4148-52	1	PCS
D304	DIODE 4148-52	1	PCS
D307	DIODE 4148-52	1	PCS
D308	DIODE 4148-52	1	PCS
D309	DIODE 4148-52	1	PCS
D311	DIODE 4148-52	1	PCS
D310	DIODE FR104	1	PCS
DZ301	ZENER DIODE 3V 1/2W-52	1	PCS
DZ303	ZENER DIODE 27V 1W -52	1	PCS
LED301	LED Φ3 3B4SCB01 (BLUE)	1	PCS
LED303	LED Φ3 3B4SCB01 (BLUE)	1	PCS
LED304	LED Φ3 3B4SCB01 (BLUE)	1	PCS
LED306	LED Φ3 3B4SCB01 (BLUE)	1	PCS
Q301	TRANSISTOR 8050C-5	1	PCS
Q304	TRANSISTOR 8050C-5	1	PCS
Q307	TRANSISTOR 8050C-5	1	PCS
Q302	TRANSISTOR 8550C-5	1	PCS
Q303	TRANSISTOR 8550C-5	1	PCS
Q309	TRANSISTOR D965-R	1	PCS
Q310	TRANSISTOR D965-R	1	PCS
IC304	IC AT24C02 (1.8V) SOP PACKING	1	PCS
IC307	IC AT24C08-PC27(2.7V) SOP PACKING	1	PCS

Factory Partlist

LOCATION	DESCRIPTION	QTY.	UNIT
IC306	IC PCF8563/AMI8563 SOP8	1	PCS
IC305	IC PT6311/SC16311/CD16311	1	PCS
S301	IR SENSOR SMALL BLACK 1MA81P14D1TD0001	1	PCS
X302	CERAMIC CRYSTAL OSCILLATOR 4.19mHz	1	PCS
X902	CRYSTAL OSCILLATOR 32.768KHz ϕ 3XH8 \pm 10PPM	1	PCS
SW305	LIGHT TOUCH SWITCH 6X6X4.3 130g	1	PCS
SW306	LIGHT TOUCH SWITCH 6X6X4.3 130g	1	PCS
SW307	LIGHT TOUCH SWITCH 6X6X4.3 130g	1	PCS
SW308	LIGHT TOUCH SWITCH 6X6X4.3 130g	1	PCS
SW311	LIGHT TOUCH SWITCH 6X6X4.3 130g	1	PCS
SW312	LIGHT TOUCH SWITCH 6X6X4.3 130g	1	PCS
SW309	LIGHT TOUCH SWITCH TP-1105CS H=8.0	1	PCS
SW310	LIGHT TOUCH SWITCH TP-1105CS H=8.0	1	PCS
CN306	PINS CONNECTOR 1.5/13P	1	PCS
CN305	PINS CONNECTOR 1.5/10P	1	PCS
CN301	PINS CONNECTOR 1.5/3P	1	PCS
CN303	PINS CONNECTOR 1.0/5P BLACK	1	PCS
	26WIRE 80 2.0/14PX1 2.0/7PX2	1	PCS
VFD301	VFD DISPLAY NE-288D-6.GB	1	PCS
L303	FERRITE BEAD JRHW0349 BLUE	1	PCS
	MAIN DISPLAY PCB 35-MCD289-03A2 166X161	1	PCS
JP301/J303-319/J321-355/J357/J358	BARE WIRE ϕ 0.6X40mm (375m=1kG)	59	PCS
JP360-399/J3001-3007/R312	BARE WIRE ϕ 0.6X40mm (375m=1kG)	49	PCS
UNDERLAY VFD BOTTOM	BLACK SPONGE 30X15X2 40°	2	PCS
UNDERLAY SENSOR	BLACK SPONGE 8X8X7 75°	1	PCS
	MCD288 LED BRACKET1 ABS	4	PCS
	MCD288 LED BRACKET3 ABS	1	PCS
D109A	TUNER BOARD ASS'Y ECO6-05	1	SET
CN1	PINS CONNECTOR 2.0X2X4P H8	1	PCS
	SHIELDING BOX F-8 28X26X13(PLATING)	1	PCS
	TUNER BOARD ASS'Y 5760IC	1	SET
R18	CHIP RESISTOR 100K 1/16W J(0603)	1	PCS
R8	CHIP RESISTOR 10K 1/16W J(0603)	1	PCS
R15	CHIP RESISTOR 10K 1/16W J(0603)	1	PCS
R16	CHIP RESISTOR 10K 1/16W J(0603)	1	PCS
R19	CHIP RESISTOR 10 1/16W J(0603)	1	PCS
R2	CHIP RESISTOR 1M 1/16W J(0603)	1	PCS
R3	CHIP RESISTOR 1M 1/16W J(0603)	1	PCS
R12	CHIP RESISTOR 1M 1/16W J(0603)	1	PCS
R4	CHIP RESISTOR 4.7K 1/16W J(0603)	1	PCS
R5	CHIP RESISTOR 4.7K 1/16W J(0603)	1	PCS
R6	CHIP RESISTOR 4.7K 1/16W J(0603)	1	PCS
R1	CHIP RESISTOR 47 1/16W J(0603)	1	PCS
R11	CHIP RESISTOR 10M 1/16W J (0603)	1	PCS
R13	CHIP RESISTOR 820 1/16W J(0603)	1	PCS
R14	CHIP RESISTOR 820 1/16W J(0603)	1	PCS
C14	CHIP CAP.10P 50V J (0603) NPO	1	PCS
R22	CHIP RESISTOR 330 1/16W J(0603)	1	PCS
C20	CHIP CAP.12P 50V J(0603)NPO	1	PCS
C25	CHIP CAP.223P 50V M (0603) Y5V	1	PCS
C21	CHIP CAP.39P 50V J (0603) NPO	1	PCS
C8	CHIP CAP.47P 50V J(0603)NPO	1	PCS
C2	CHIP CAP.224P 50V M (0603) Y5V	1	PCS
C3	CHIP CAP.224P 50V M (0603) Y5V	1	PCS

Factory Partlist

LOCATION	DESCRIPTION	QTY.	UNIT
C4	CHIP CAP.224P 50V M (0603) Y5V	1	PCS
C5	CHIP CAP.224P 50V M (0603) Y5V	1	PCS
C1	TANTALUM CAP. 22uF/6.3V (A) (3216)	1	PCS
C18	TANTALUM CAP. 22uF/6.3V (A) (3216)	1	PCS
C19	TANTALUM CAP. 22uF/6.3V (A) (3216)	1	PCS
C22	TANTALUM CAP. 22uF/6.3V (A) (3216)	1	PCS
C24	TANTALUM CAP. 22uF/6.3V (A) (3216)	1	PCS
C7	CHIP CAP.27P 50V J(0603) NPO	1	PCS
C6	CHIP CAP.100P 50V K (0603) X7R	1	PCS
C23	CHIP CAP.100P 50V K (0603) X7R	1	PCS
C10	CHIP CAP.103P 50V K (0603) X7R	1	PCS
C11	CHIP CAP.103P 50V K (0603) X7R	1	PCS
C15	CHIP CAP.103P 50V K (0603) X7R	1	PCS
C16	CHIP CAP.103P 50V K (0603) X7R	1	PCS
C17	CHIP CAP.103P 50V K (0603) X7R	1	PCS
C9	CHIP CAP.104P 50V M (0603) Y5V	1	PCS
C13	CHIP CAP.104P 50V M (0603) Y5V	1	PCS
C12	CHIP CAP.104P 50V M (0603) Y5V	1	PCS
L1	CHIP INDUCTOR 120n (0603)	1	PCS
L7	CHIP INDUCTOR 39n J (0603)	1	PCS
L8	CHIP INDUCTOR 10U (0603)	1	PCS
DZ1	CHIP ZENER DIODE 3.6V 1/2W (LL-34)	1	PCS
Q2	CHIP TRANSISTOR 9014 (SOT-23)	1	PCS
Q3	CHIP TRANSISTOR 9014 (SOT-23)	1	PCS
Q1	CHIP TRANSISTOR 8050(SOT-23)	1	PCS
IC2	IC 74HC2G04	1	PCS
IC1	IC TEA5760UK	1	PCS
X1	CRYSTAL OSCILLATOR 32.768KHZ ϕ 2X6	1	PCS
L4	FERRITE BEAD 601 K (0603)	1	PCS
L5	FERRITE BEAD 601 K (0603)	1	PCS
	TUNER PCB 35-ECO6-05A1	1	PCS
D105	MCD288E(V1.2) HEADPHONE BOARD ASS'Y	1	SET
R104	CARBON FILM RESISTOR 100 1/8W J-52	1	PCS
R102	CARBON FILM RESISTOR 10K 1/8W J-52	1	PCS
R113	CARBON FILM RESISTOR 1K 1/8W J-52	1	PCS
R114	CARBON FILM RESISTOR 1K 1/8W J-52	1	PCS
R101	CARBON FILM RESISTOR 22K 1/8W J-52	1	PCS
R103	CARBON FILM RESISTOR 4.7K 1/8W J-52	1	PCS
L101	AXIAL FIXED INDUCTOR 10u 52	1	PCS
L102	AXIAL FIXED INDUCTOR 10u 52	1	PCS
LED101	LED 3R4CB71D-2B-208 (BLUE)	1	PCS
LED102	LED 3R4CB71D-2B-208 (BLUE)	1	PCS
SW101	LIGHT TOUCH SWITCH KFC-05	1	PCS
SW102	LIGHT TOUCH SWITCH KFC-05	1	PCS
SW103	LIGHT TOUCH SWITCH KFC-05	1	PCS
SW104	LIGHT TOUCH SWITCH KFC-05	1	PCS
J105	HEADPHONE JACK ϕ 3.5 TE-03501S-05 SILV.	1	PCS
J104	HEADPHONE JACK ϕ 3.5 TE-03501S-11	1	PCS
J106	USB JACK(A-TYPE 4P FEMALE 90°DIP BLACK)	1	PCS
CN101	PINS CONNECTOR 2.0/7P	1	PCS
CN102	PINS CONNECTOR 2.0/7P	1	PCS
	HEADPHONE PCB(V1.2) 35-MCD288E-01A2	1	PCS
JP101-105	BARE WIRE ϕ 0.6X40mm (375m=1kG)	5	PCS

Factory Partlist

LOCATION	DESCRIPTION	QTY.	UNIT
D106	MCD268/93 MCU PARTS ASS'Y	1	SET
IC302	CPU U252(3P9228 XYZ-CAN CHANGE)	1	PCS
	MCD268/93 CPU SOFTWARE(V1.0)	1	PCS
D109	MCD268/93 DECODER ASS'Y	1	SET
	IC TDA8932 (SSOP32)	1	PCS
	DVD DECODER 89HA288E	1	PCS
IC8932	HEAT SINK 15.7X5.6X16(FOR288E)	1	PCS
	MCD268/93 DVD SOFTWARE(V1.0SND)	1	PCS
D108	MCD288 MECHANISM ASS'Y VSH-L33D-71229V	1	SET
	DVD MECHANISM(SONY KHM-313AAA)	1	PCS
	MECHANISM BRACKET VSH-L33D-71229V	1	PCS
	SCREW 2.6X10 PWBB (Φ10) (PLATING)	4	PCS
	MCD288E/98 MAIN PANEL FRAME ASS'Y	1	SET
D104G	MCD288 TRANSMISSION SHAFT	1	PCS
D104H	MCD288 SMOOTH POLE	2	PCS
D104J	MCD288 SLIDING DOOR SPRING(L)	1	PCS
D104I	MCD288 SLIDING DOOR SPRING(R)	1	PCS
D104A	MCD288 MAIN PANEL DECORATIVE SHEET	1	PCS
	SHEET COPPER 30X4X0.05	1	PCS
D104D	MCD288 PUSH DOOR BRACKET ABS	2	PCS
D104F	MCD288 DOOR BRACKET ABS	2	PCS
D104E	MCD288 ROCKER ABS	2	PCS
D104	MCD288 MAIN PANEL ABS	1	PCS
D104C	MCD288 CONNECT BRACKET ABS	2	PCS
D104B	MCD288 STANDBY-OPEN-KNOB ABS BLACK	2	PCS
	MCD268/98 MAIN DISPLAY FRAME ASS'Y	1	SET
D101A	MCD288E DISPLAY LENS PC	1	PCS
D101B	MCD288 ROUND LIGHT-GUIDE PMMA	1	PCS
D101	MCD288 FRONT LENS BRACKET ABS	1	PCS
D101C	MCD288 FUNCTION-BUTTON(SOURCE)	1	PCS
D101D	MCD288 FUNCTION-BUTTON(PLAY)	1	PCS
D101E	MCD288 FUNCTION-BUTTON(STOP)	1	PCS
D101F	MCD288 FUNCTION-BUTTON(PROGRAM)	1	PCS
D101G	MCD288 FUNCTION-BUTTON(VOLUME-)	1	PCS
D101H	MCD288 FUNCTION-BUTTON(VOLUME+)	1	PCS
	MCD288 REFLECT LIGHT PAPER	1	PCS
	MCD288 FILTER	1	PCS
	MCD288 LEAKPROOF LABEL 15X18	4	PCS
	MCD288 MAIN BRACKET FOOT ASS'Y	1	SET
D127	MCD288 FOOT FRONT-COVER HIPS BLACK	1	PCS
D128	MCD288 FOOT BACK-COVER HIPS BLACK	1	PCS
D126	MCD288 BRACKET F-CAB. ABS BLACK	1	PCS
	BLACK SPONGE 11.7X6.8X8 75°	4	PCS
	MCD289 FUNCTION BUTTON ASS'Y	1	SET
D103	MCD288 ADDITIONAL KEY PANEL ABS	1	PCS
D103C	MCD288 ADDITIONAL KEY BRACKET ABS	1	PCS
D103D	MCD288 ADDITIONAL KEY ABS SILVER	4	PCS
D103B	MCD288 USB LIGHT-GUIDE PMMA	1	PCS
D103A	MCD288 USB MARK BOARD	1	PCS

Factory Partlist

LOCATION	DESCRIPTION	QTY.	UNIT
	MCD268/98 MAIN CASING PARTS ASS'Y	1	SET
D118	MCD288 SPRING PRESS-PIECE	2	PCS
D114A	MCD288 SPEAKER ARM IRON PLATE(L)	1	PCS
D115A	MCD288 SPEAKER ARM IRON PLATE(R)	1	PCS
	NE-950 DOOR SWITCH PLATE	2	PCS
D120	MCD288 SPEAKER ARM BRACKET(L)	1	PCS
D121	MCD288 SPEAKER ARM BRACKET(R)	1	PCS
D119	MCD288 SPEAKER BRASS STUD	2	PCS
D124	MCD288E BACK COVER ABS(4Ω) For268	1	PCS
D123	MCD288 TERMINAL COVER HIPS	1	PCS
D113	MCD288 CONNECT PART HIPS BLACK	1	PCS
D114	MCD288 SPEAKER ARM(L) ABS+GP BLACK	1	PCS
D115	MCD288 SPEAKER ARM(R) ABS+GP BLACK	1	PCS
D125	MCD288 PRESS PIECE HIPS	1	PCS
D102	MCD289 PUSH-DOOR PC(For MCD268)	1	PCS
D116	MCD288 ORIENTATION PLASTIC(BLACK)	4	PCS
D117	MCD288 SPEAKER BOX ARM COVER(L)ABS	1	PCS
D122	MCD288 SPEAKER BOX ARM COVER(R)ABS	1	PCS
D112	MCD288 MAINFRAME TOP DECORATION	1	PCS
D110	MCD288 MAINFRAME TOP DECORATION	1	PCS
D111	MCD288 MAINFRAME TOP DECORATION	1	PCS
	MCD288 INPUT DISC DUSTPROOF LABEL	1	PCS
	FERRITE CORE JTH16X12X8	1	PCS
	FLAT FLEXIBLE CABLE 24PX160X0.5XA	1	PCS
	28WIRE 180 1.5/13PX1 2.0/10PX1	1	PCS
	28WIRE 250+190 1.5/10PX1 2.0/6P/4PX1	1	PCS
	28WIRE 280 1.5/3PX1 2.0/3PX1	1	PCS
	28WIRE 250 2.0/6PX2	1	PCS
A	ACCESSORIES		
	26 SINGLE WIRE 1.5m BLACK(FM ANTENNA)	1	PCS
	RCA CABLE 3P(R/Y/W)+Φ3.5PLUG(3 DC) 1.5M	1	PCS
	MCD268/93 GIFT BOX	1	PCS
	MCD268/93 CARTON BOX	1	PCS
A1	REMOTE CONTROL ASS'Y PRC500-47	1	SET
A2	MCD268/93 SPEAKER BOX ASS'Y(L)	1	SET
A3	MCD268/93 SPEAKER BOX ASS'Y(R)	1	SET
A4	MCD268/93 SUBWOOFER SPEAKER BOX ASS'Y	1	SET
A4A	MCD288E/12 POWER BOARD ASS'Y	1	SET
	IC TDA8947J	1	PCS
	POWER BOARD ASS'Y DVD AMP POW180 FOR/12	1	PCS
	MCD289 HEAT SINK BRACKET 40X42X80	1	PCS
A4B	MCD268/93 SUBWOOFER SPEAKER BOX CASING ASS'Y	1	SET